



TECHNICAL INSIGHT Slatz® Capture®



PAPER INSERTS

Make changes for paper inserts on in-house computers.



SINGLE SIGN

Combine extrusion and two end caps for single sign.



DIRECTORY OPTIONS

Use sidetracks and multiclips to create a directory for paper or engraved inserts.



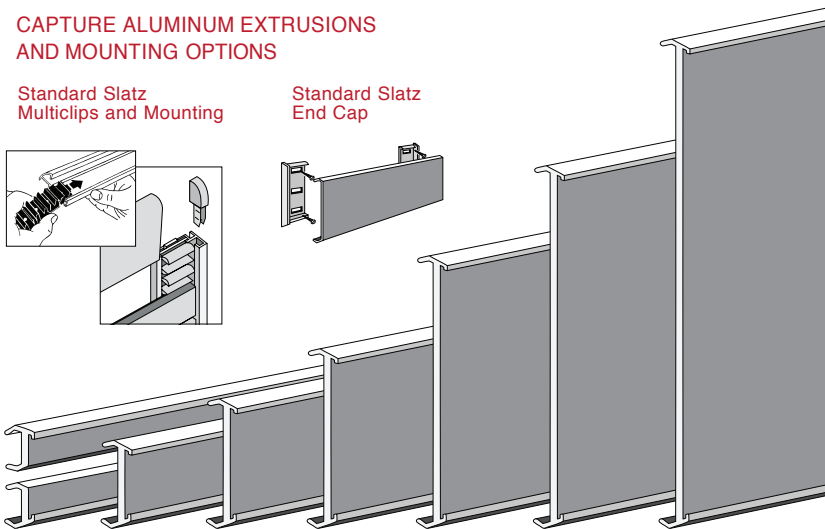
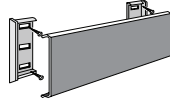
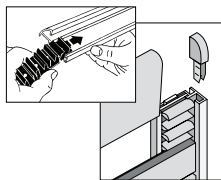
RIGID INSERTS

Engraved inserts up to 1/16 inch thick include acrylic, zinc and photopolymer. (Cutaway shows multiclips.)

CAPTURE ALUMINUM EXTRUSIONS AND MOUNTING OPTIONS

Standard Slatz Multiclips and Mounting

Standard Slatz End Cap



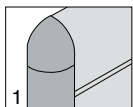
CUSTOM SIZE INSERTS

For inserts exceeding the size of the Jumbo extrusion, use a pair of Slatz Mini-Holders, placed top and bottom. This enables you to create space for a large, flat surface, allowing you to position an expanded graphic or engraving into a Slatz directory or other configuration.

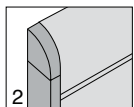
Mini Holders	Capture Little	Capture Middle	Capture Big	Capture King	Capture Super	Capture Jumbo
	1-5/8"	2-3/8"	3-1/4"	4-7/8"	6-7/16"	8-7/8" overall
	1-3/10"	2-1/8"	2-7/8"	4-7/16"	6-3/32"	8-1/2" insert/lens

FRAMING OPTIONS

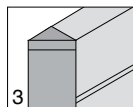
Framing options require two selections: trimplate and sidetrack.



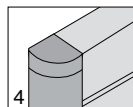
1 Quad Track and Curved Trimplates



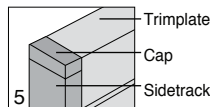
2 Square Track and Curved Trimplates



3 Angle Track and Square Trimplates



4 Quad Track and Square Trimplates



5 Square Track and Square Trimplates