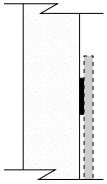


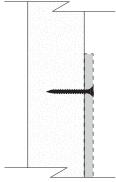


# MOUNTING OPTIONS BY WALL TYPE

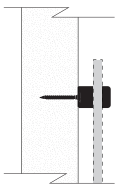
## DRYWALL SURFACE OPTIONS



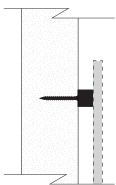
**ADHESIVE** (Double Face Tape and Silicone) For use on hard wall surfaces with a smooth finish, such as drywall. Adhesive may not be applicable for some vinyl wall coverings.



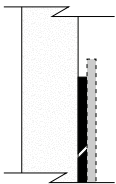
**SCREW** For use on rough surfaces such as brick and block. Also recommended on all wall-mount signs, including on drywall.



**STAND OFF** For use on smooth, hard surfaces. Not recommended for some vinyl wall coverings.

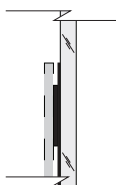


**STUD** For use on smooth, hard surfaces. Not recommended for some vinyl wall coverings.



**CLEAT** For use on smooth, hard surfaces. Not recommended for some vinyl wall coverings.

## GLASS SURFACE OPTIONS



**GLASS BACKER** For use on glass surfaces where the opposite side is visible. A vinyl piece replicates the sign shape and size and hides the double face tape adhesive from the viewer.

## FABRIC SURFACE OPTIONS

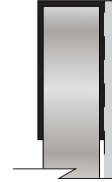


**PIN MOUNT** For use on fabric surfaces, including fabric mounted on hard material and acoustical panels.

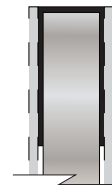
## CUBICLE STRUCTURE OPTIONS



**HOOK** For use on cubicle and wall furniture panels. Clear material hooks over the top of the panel.



**SADDLE** For use on cubicle and wall furniture panels including clear and frosted panels. Aluminum hooks over the top of the panel and the sign is flush with the top.



**DOUBLE SADDLE** For use on cubicle and wall furniture panels including clear and frosted panels. Aluminum hooks over the top of the panel and the signs are flush with the top.



**PANEL/TILE** For use on furniture panels and tiles. The aluminum hooks over the top of the panel or tile and is concealed by the top cap. The sign is flush with the top of the panel.



**MAGNETIC** For use on steel or magnetized surfaces.



**PANEL TOP** For use on the top surface of a cubicle or furniture panel. The bracket is extruded aluminum and is affixed to the top of the panel with pressure sensitive double faced tape.