

1400 Design Series

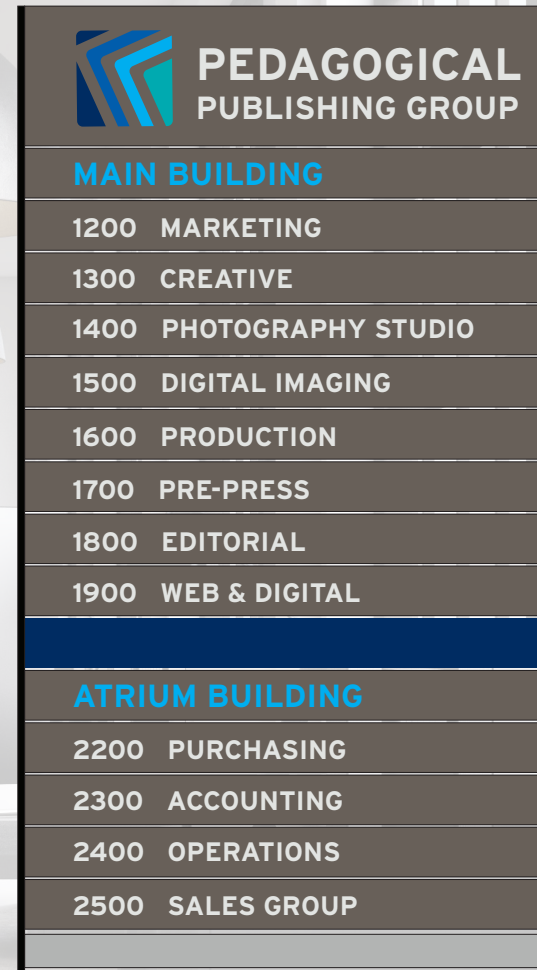
The 1400 Series is a flat profile, modular sign system using extruded aluminum and changeable inserts. End caps secure single face signs, while additional vertical channels create directories and larger sign systems.



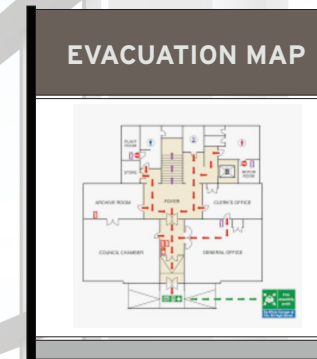
PROJECTING (P)



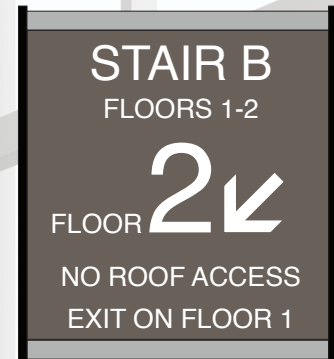
SUSPENDED (S)



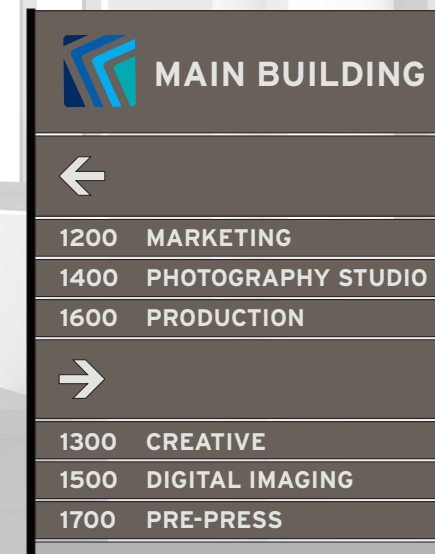
DIRECTORY (A)



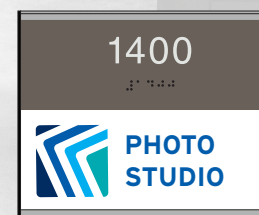
EVACUATION (C)



STAIRWELL (N)



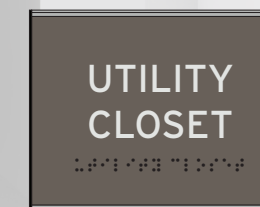
DIRECTIONAL (B)



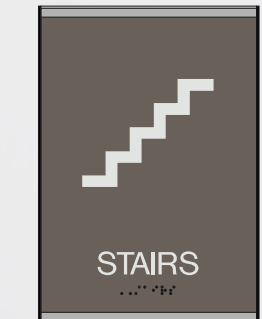
OFFICE/ROOM (D)



WORKSTATION (E)



UTILITY (G)



REGULATORY (J)