

# **1100** Design **SERIES**

**People  
Signs®**

**WAYFINDING &  
VISUAL ENVIRONMENTS**

# 1100

## DESIGN SERIES

---

The People Signs 1100 Design Series is **our most economical option** and is ADA compliant. This series is clean and simple in its composition. This style is suitable for almost any type of facility or environment. The signs in this series are lightweight and feature a full pass-through insert holder allowing for removal from both the right and the left sides. While each sign has a header, footer, and an accent stripe, the sign depth is slim, yet attractively layered. The fully customizable paper insert can vary from a very simple black and white option to a stunning full-color design that coordinates the sign colors and overall surroundings.

The logo for GSA (General Services Administration) is located at the bottom center of the page. It consists of the letters "GSA" in white, bold, sans-serif font, set against a dark blue square background. A small registered trademark symbol (®) is positioned to the upper right of the square.

# 1100 Design SERIES

TACTILE RAISED TEXT

ADA COMPLIANT NON-GLARE  
ACRYLIC HEADER

GRADE II  
BRAILLE

(AVAILABLE IN CLEAR, WHITE,  
BLACK, AND STAINLESS STEEL)

ACCENT  
STRIPE

CLEAR LENS AND  
PASS-THROUGH  
SLOT FOR A  
PAPER INSERT

CUSTOMIZABLE  
PAPER INSERT

SIGN TYPE D, OFFICE/ROOM

FOOTER

BACKER

# 1100 Design Series

The 1100 Design Series features a slim profile, accent stripe, and a single window allowing a full pass-through on the right and left for a paper insert.

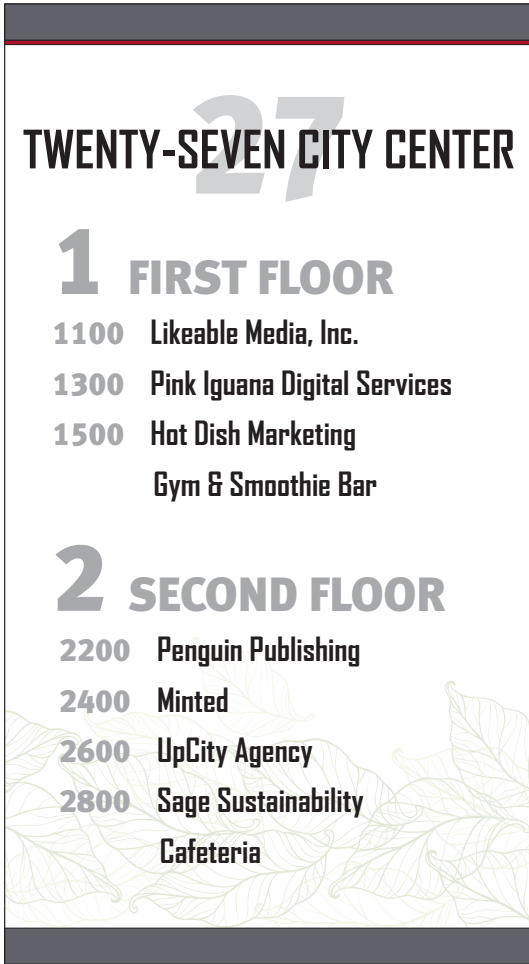




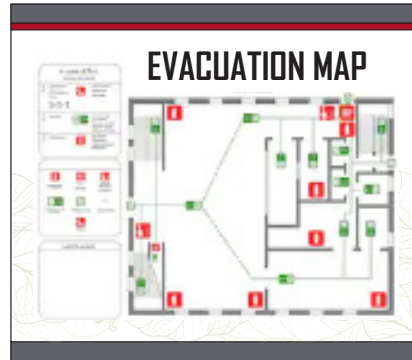
PROJECTING (P)



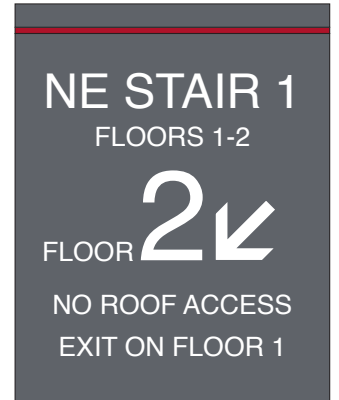
SUSPENDED (S)



DIRECTORY (A)



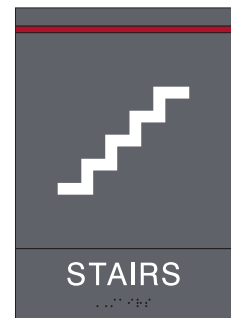
EVACUATION (C)



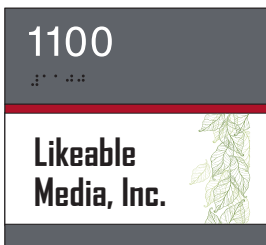
STAIRWELL (N)



DIRECTIONAL (B)



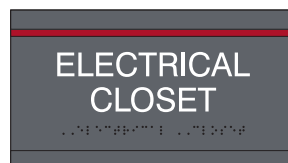
REGULATORY (J)



OFFICE/ROOM (D)



WORKSTATION (E)



UTILITY (G)

# RESOURCES

---

[ADA Compliant Colors](#)

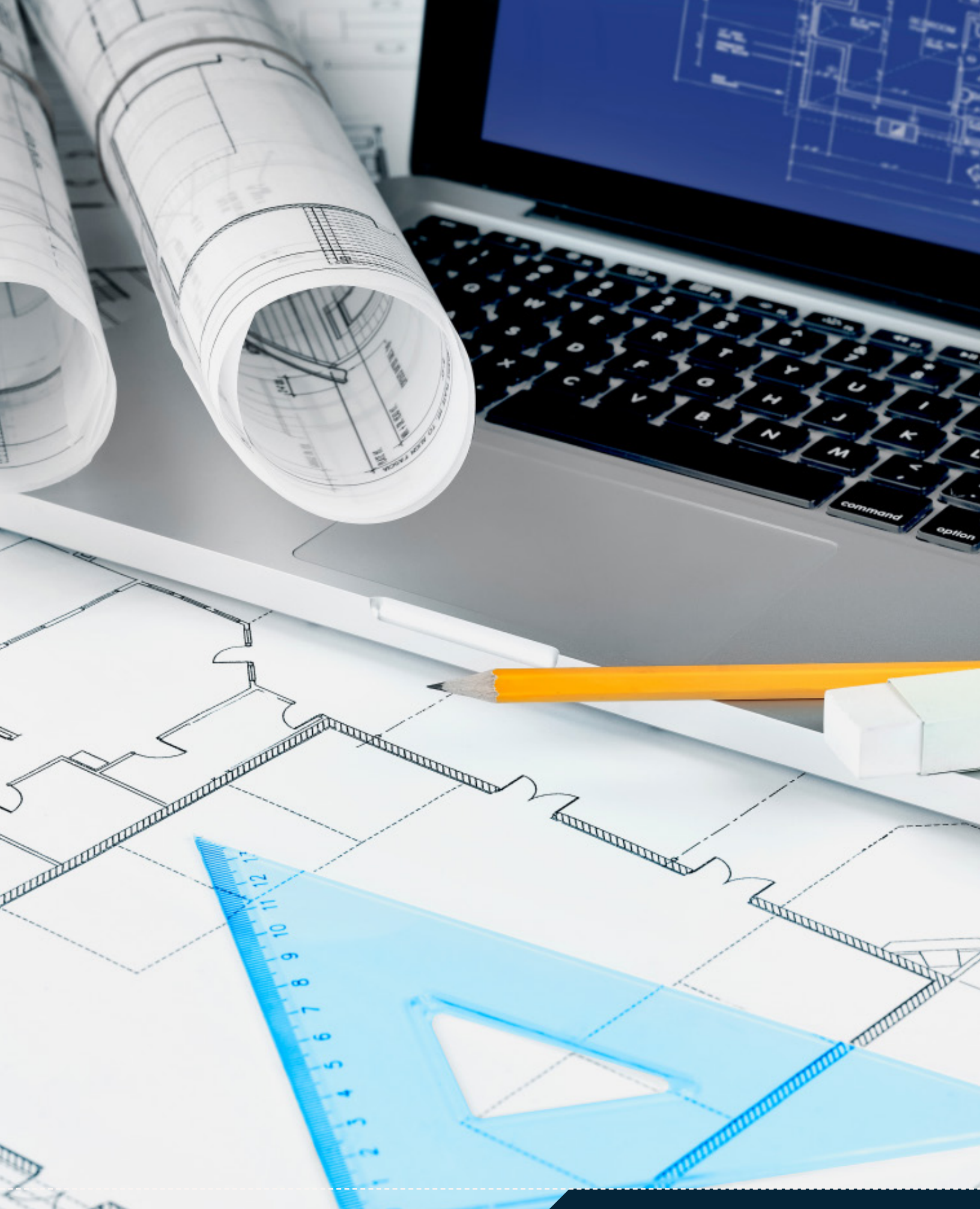
[ADA Compliant Fonts and Arrows](#)

[Common Pictograms](#)

[Mounting By Wall Type](#)

[Wayfinding By People Signs](#)

[Sign Series Specifications](#)



# ADA COMPLIANT COLORS

## MATTE FINISH ACRYLIC

<b>601</b> Red	<b>602</b> Burgundy	<b>823</b> Canyon	<b>603</b> Orange	<b>701</b> Yellow	<b>901</b> Bright Green	<b>902</b> Pine Green	<b>991</b> Hunter Green
<b>903</b> Black Forest Green	<b>509</b> Bahama Blue	<b>501</b> Blue	<b>506</b> Sapphire	<b>571</b> Light Blue	<b>521</b> Coastal Blue	<b>302</b> China Blue	<b>321</b> Slate
<b>502</b> Marine Blue	<b>504</b> Air Force Blue	<b>581</b> Ultra Violet	<b>801</b> Antique Ivory	<b>808</b> Sand	<b>214</b> Ash	<b>811</b> Parchment	<b>218</b> Sandalwood
<b>201</b> White	<b>204</b> Bright White	<b>305</b> Light Grey	<b>306</b> Pearl Grey	<b>851</b> Desert Sand	<b>595</b> Driftwood	<b>331</b> Grey Flannel	<b>301</b> Grey
<b>993</b> Silver Metallic	<b>307</b> Charcoal Grey	<b>413</b> Cinder	<b>831</b> Beige	<b>805</b> Candlewick	<b>806</b> Putty	<b>802</b> Taupe	<b>803</b> Dark Brown
<b>821</b> Medium Brown	<b>401</b> Black	<b>891</b> Copper	<b>871</b> Deep Bronze	<b>771</b> Gold	<b>304</b> Silver	<b>398</b> Graphite	
<b>Photoluminescent*</b>	<b>354</b> Brushed Aluminum**	<b>313</b> Brushed Stainless**	<b>Natural Maple*</b>	<b>Select Cherry*</b>	<b>Prestige Walnut*</b>		

Colors may vary due to the printing process. 354 Brushed Aluminum has a black core. 313 Brushed Stainless has a silver core.

\* Denotes special pricing.

\*\*Denotes special pricing and due to metallic finish, not ADA compliant.



## ADA COMPLIANT FONTS AND ARROWS

Arial Regular

ABCDEFGHIJKLMNOPQRSTUVWXYZ

abcdefghijklmnopqrstuvwxyz

1234567890



AvantGarde

ABCDEFGHIJKLMNOPQRSTUVWXYZ

abcdefghijklmnopqrstuvwxyz

1234567890



Avenir Roman

ABCDEFGHIJKLMNOPQRSTUVWXYZ

abcdefghijklmnopqrstuvwxyz

1234567890



Century Gothic Regular

ABCDEFGHIJKLMNOPQRSTUVWXYZ

abcdefghijklmnopqrstuvwxyz

1234567890



Frutiger Roman

ABCDEFGHIJKLMNOPQRSTUVWXYZ

abcdefghijklmnopqrstuvwxyz

1234567890



Futura Medium

ABCDEFGHIJKLMNOPQRSTUVWXYZ

abcdefghijklmnopqrstuvwxyz

1234567890



Gill Sans Regular

ABCDEFGHIJKLMNOPQRSTUVWXYZ

abcdefghijklmnopqrstuvwxyz

1234567890



Helvetica Regular

ABCDEFGHIJKLMNOPQRSTUVWXYZ

abcdefghijklmnopqrstuvwxyz

1234567890



Interstate Regular

ABCDEFGHIJKLMNOPQRSTUVWXYZ

abcdefghijklmnopqrstuvwxyz

1234567890



Myriad Roman

ABCDEFGHIJKLMNOPQRSTUVWXYZ

abcdefghijklmnopqrstuvwxyz

1234567890



Swiss 721 BT Roman

ABCDEFGHIJKLMNOPQRSTUVWXYZ

abcdefghijklmnopqrstuvwxyz

1234567890



Trebuchet Regular

ABCDEFGHIJKLMNOPQRSTUVWXYZ

abcdefghijklmnopqrstuvwxyz

1234567890



Universe Roman 55

ABCDEFGHIJKLMNOPQRSTUVWXYZ

abcdefghijklmnopqrstuvwxyz

1234567890



Verdana Regular

ABCDEFGHIJKLMNOPQRSTUVWXYZ

abcdefghijklmnopqrstuvwxyz

1234567890

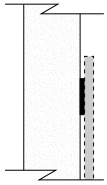


# COMMON PICTOGRAMS

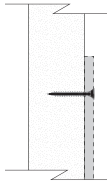
						
<b>P1</b> Telephone	<b>P2</b> Mail	<b>P3</b> Currency Exchange	<b>P4</b> Cashier	<b>P5</b> First Aid	<b>P6</b> Lost & Found	<b>P7</b> Coat Check
						
<b>P8</b> Exit	<b>P9</b> Escalator	<b>P10</b> Escalator Down	<b>P11</b> Escalator Up	<b>P12</b> Stairs	<b>P13</b> Stairs Down	<b>P14</b> Stairs Up
						
<b>P15</b> Elevator	<b>P16</b> Mens Room	<b>P17</b> Womens Room	<b>P18</b> Restroom	<b>P19</b> Gender Neutral	<b>P20</b> Water Fountain	<b>P21</b> Waiting Room
						
<b>P22</b> Information	<b>P23</b> Hotel Information	<b>P24</b> Air Transportation	<b>P25</b> Heliport	<b>P26</b> Taxi	<b>P27</b> Bus	<b>P28</b> Ground Transportation
						
<b>P29</b> Rail Transportation	<b>P30</b> Water Transportation	<b>P31</b> Car Rental	<b>P32</b> Restaurant	<b>P33</b> Coffee Shop	<b>P34</b> Bar	<b>P35</b> Shops

# MOUNTING BY WALL TYPE

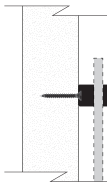
## DRYWALL SURFACE OPTIONS



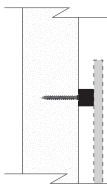
**ADHESIVE** (Double Face Tape and Silicone) For use on hard wall surfaces with a smooth finish, such as drywall. Adhesive may not be applicable for some vinyl wall coverings.



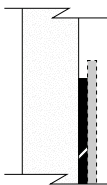
**SCREW** For use on rough surfaces such as brick and block. Also recommended on all wall-mount signs, including on drywall.



**STAND OFF** For use on smooth, hard surfaces. Not recommended for some vinyl wall coverings.

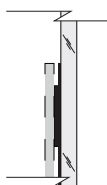


**STUD** For use on smooth, hard surfaces. Not recommended for some vinyl wall coverings.



**CLEAT** For use on smooth, hard surfaces. Not recommended for some vinyl wall coverings.

## GLASS SURFACE OPTIONS



**GLASS BACKER** For use on glass surfaces where the opposite side is visible. A vinyl piece replicates the sign shape and size and hides the double face tape adhesive from the viewer.

## FABRIC SURFACE OPTIONS



**PIN MOUNT** For use on fabric surfaces, including fabric mounted on hard material and acoustical panels.

## CUBICLE STRUCTURE OPTIONS



**HOOK** For use on cubicle and wall furniture panels. Clear material hooks over the top of the panel.



**SADDLE** For use on cubicle and wall furniture panels including clear and frosted panels. Aluminum hooks over the top of the panel and the sign is flush with the top.



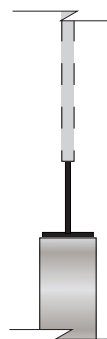
**DOUBLE SADDLE** For use on cubicle and wall furniture panels including clear and frosted panels. Aluminum hooks over the top of the panel and the signs are flush with the top.



**PANEL/TILE** For use on furniture panels and tiles. The aluminum hooks over the top of the panel or tile and is concealed by the top cap. The sign is flush with the top of the panel.



**MAGNETIC** For use on steel or magnetized surfaces.



**PANEL TOP** For use on the top surface of a cubicle or furniture panel. The bracket is extruded aluminum and is affixed to the top of the panel with pressure sensitive double faced tape.

# SIGN SERIES SPECIFICATIONS

Please note all dimensions listed are nominal. Refer to shop drawings for all exact dimensions.

SIGN TYPE	OVERALL DIMENSION (width x height)	DEPTH	HEADER HEIGHT	FOOTER HEIGHT	ACCENT STRIPE	INSERT SIZE	PRINTER	BRAILLE	MOUNTING HEIGHT
<b>1100 SERIES (\$)</b>									
<b>DIRECTORY</b>	22.00" x 40.00"	0.50"	1.50"	1.50"	0.187"	22.00" x 37.00"	Oversize	No	60.00" COS
<b>DIRECTIONAL</b>	18.00" x 23.00"	0.25"	1.50"	1.50"	0.187"	18.00" x 20.00"	Oversize	No	60.00" COS
<b>OFFICE/ ROOM</b>	5.50" x 5.00"	0.25"	2.00"	0.50"	0.187"	5.50" x 2.50"	Standard	Yes	60.00" TOS
<b>WORK- STATION</b>	5.50" x 3.187"	0.25"	0.50"	0.50"	0.187"	5.50" x 2.00"	Standard	No	60.00" TOS
<b>UTILITY</b>	7.50" x 4.187"	0.25"	0.50"	0.50"	0.187"	7.50" x 3.00"	N/A	Yes	60.00" TOS
<b>REGULATORY</b>	6.00" x 8.687"	0.25"	0.50"	2.00"	0.187"	6.00" x 6.00"	N/A	Yes	60.00" TOS
<b>STAIRWELL</b>	16.00" x 21.00"	0.25"	0.50"	2.00"	0.187"	N/A	N/A	Yes	60.00" TOS
<b>EVAC MAP</b>	11.00" x 9.50"	0.25"	0.50"	0.50"	0.187"	11.00" x 8.50"	Standard	No	60.00" TOS
<b>SUSPENDED</b>	42.00" x 8.00"	0.50"	0.50"	0.50"	N/A	42.00" x 6.50"	N/A	No	84.00" BOS
<b>PROJECTING</b>	8.125" x 7.687"	0.625"	0.50"	0.50"	0.187"	8.125" x 6.50"	N/A	No	84.00" BOS

COS = Center of Sign  
TOS = Top of Sign  
BOS = Bottom of Sign

**\$ GOOD**  
**\$\$ BETTER**  
**\$\$\$ BEST**

## **PEOPLE SIGNS**

1857 Walnut Street Allentown, PA  
18104  
610-434-3613

**WWW.PEOPLESIGNS.COM**

**Business Size:** Small

**DUNS:** 045281529

**Fed ID:** 04-3748473

**Cage Code:** OGZM3

**NAICS:** 339950

**GSA Schedule:** 47QSMA21D08QP



Disclaimer: People Signs reserves the right to make changes to any of the products, sizes, colors, or materials featured in this brochure without prior notification.