



**People  
Signs<sup>®</sup>**

**WAYFINDING &  
VISUAL ENVIRONMENTS**



**PROJECTING SIGN**



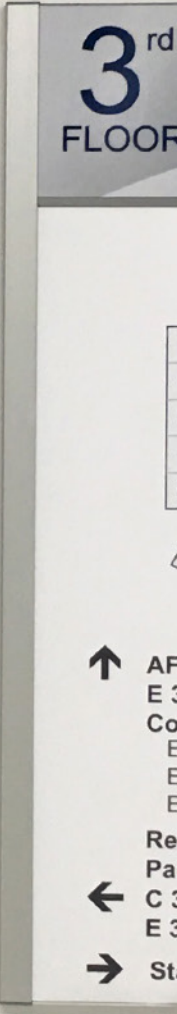
**RESTROOM SIGN**

**ROOM SIGN**

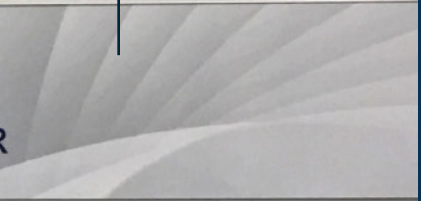
**UTILITY SIGN**

**DIRECTIONAL**

**STAIR SIGN**



**DIRECTIONAL & EVACUATION MAP**



**CONFERENCE CE**

**WEST**      **CENTRAL**

W 3150 AFGE W 3148 W 3120 W 3121 W 3122 W 3123 C 3020 C 3010 E 3010 E 3020  
W 3160 C 3110 C 3030  
W 3170  
W 3180 WEST LOBBY SERVICE DESK C 3000 CONFERENCE CENTER EAST LOBBY  
W 3190 E D C B A R I L M N  
MEETING AND EVENTS MANAGEMENT W 3250 W 3210 W 3220 C 3080 C 3090 E 3410

**GE Local 3403**  
**3400 - E 3495**  
**Conference Rooms**  
E 3410  
E 3430  
E 3450

**Restrooms**  
**Entry**  
3000 - C 3090  
3300 - E 3360

**Stairs to Floors 1 & 2**

**TABLE OF CONTENTS**

About People Signs . . . . .4

Standard Interior Design  
Sign Series Overview . . . . .6

Experiential Design . . . . . 48

Dimensional Letters & Logos . . . . .52

Seals & Plaques . . . . .56

Wall Murals & Graphics . . . . . 60

Recognition & Donor Walls . . . . . 64

Resources . . . . . 68

# People Signs®

**People Signs is an innovator in the planning, creation and fabrication of smartly designed, expertly integrated, wayfinding sign systems.**

People Signs' experts will partner with you in the early stages of a new business complex or office expansion, join your team on the retrofit of an existing facility, or provide ongoing support for your changing signage needs. After all, a sign program well-planned and well-executed will help establish the momentum and energy your business requires from day one.

**We are your partner in project planning and product selection.**

There are many benefits to planning your signage program at the earliest stages of your project. Understanding and anticipating the proper traffic flow on the interior of your facility can provide important insights to your overall plan and maximize your efforts right from the start.

**Creating dynamic flow through everyday spaces.** Once inside, you need to ensure that visitors and employees move about accurately and with ease to a desired destination. Complementary to the interior design of your workspace, interior wayfinding signs provide direction, identify rooms and personnel, alert visitors to prohibited areas, and even guide them to safety in the event of an unforeseen emergency.

At nearly every juncture of your project, **People Signs evaluates both the physical environment and the feedback provided by you and your staff.** Be assured, we will recommend the proper signage designed to meet the criteria of the Americans with Disabilities Act (ADA) in conjunction with other national and local sign codes. The result is a comprehensive plan outlining the project scope through design recommendations supporting the projected budget. Our team will provide you with the greatest flexibility to determine the best solutions for your business.





**STOUDT**  
BUILDING

**First Floor**

Admissions

Spirit Store

Dining

Multipurpose Room

Student Service Center

**Second Floor**

Alumni Relations & Development

Board Room

Finance

Deans' Offices

Human Resources

Institutional Research

Marketing & Communication

President's Suite

# STANDARD INTERIOR DESIGN Sign Series OVERVIEW

■-----■

The following sections present an ever-changing selection of ADA compliant signs offering options that meet your needs using industry standard materials and feature changeable inserts. Take the guesswork out of these selections by choosing a sign series that provides a simple combination of shapes, colors, and architectural styles.

**Select a basic architectural shape to coordinate with or complement the interior design of the facility.** A predetermined sign series allows buyers to see how both the concept and the shape of their selection apply to the sign types required for a total project.

**Changeable paper inserts provide maximum flexibility,** giving management control of content on an as needed basis. Raised acrylic copy, graphics, and Grade II Braille **meet ADA requirements** for mandated permanent signage.

**Logos and other branding or design elements may be applied** to the sign header and paper insert to enhance the products selected. **Standard and custom colors are available for all sign series.**

On the following pages, 8 through 47, sign types are accompanied by an alphabetic letter in parenthesis. This letter is a general reference indicating the prefix of a sign type designated on a submittal, as a sign location marking, and finalized during project planning.







# 1100

## DESIGN SERIES

---

The People Signs 1100 Design Series is **our most economical option** and is ADA compliant. This series is clean and simple in its composition. This style is suitable for almost any type of facility or environment. The signs in this series are lightweight and feature a full pass-through insert holder allowing for removal from both the right and the left sides. While each sign has a header, footer, and an accent stripe, the sign depth is slim, yet attractively layered. The fully customizable paper insert can vary from a very simple black and white option to a stunning full-color design that coordinates the sign colors and overall surroundings.

The logo for GSA (General Services Administration) is located at the bottom center of the page. It consists of the letters "GSA" in a white, sans-serif font, set against a dark blue square background. A small registered trademark symbol (®) is positioned to the upper right of the square.



# 1100 Design SERIES

TACTILE RAISED TEXT

ADA COMPLIANT NON-GLARE  
ACRYLIC HEADER

GRADE II  
BRAILLE

(AVAILABLE IN CLEAR, WHITE,  
BLACK, AND STAINLESS STEEL)

ACCENT  
STRIPE

CLEAR LENS AND  
PASS-THROUGH  
SLOT FOR A  
PAPER INSERT

CUSTOMIZABLE  
PAPER INSERT

SIGN TYPE D, OFFICE/ROOM

FOOTER

BACKER



# 1100 Design Series

The 1100 Design Series features a slim profile, accent stripe, and a single window allowing a full pass-through on the right and left for a paper insert.





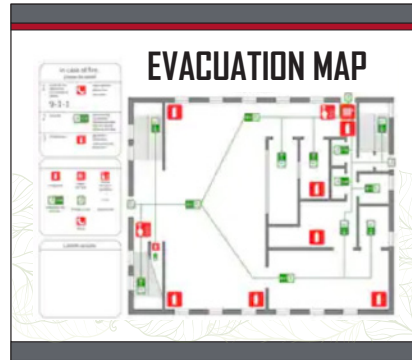
PROJECTING (P)



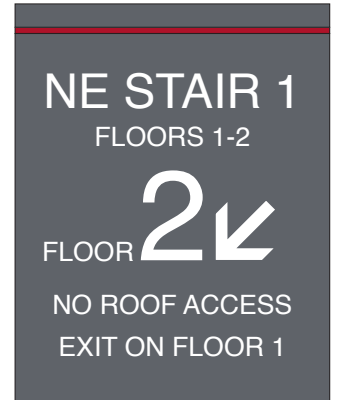
SUSPENDED (S)



DIRECTORY (A)



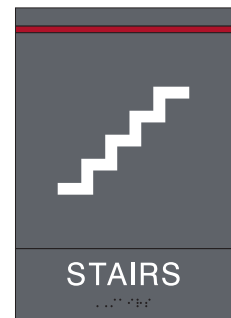
EVACUATION (C)



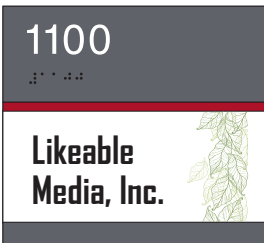
STAIRWELL (N)



DIRECTIONAL (B)



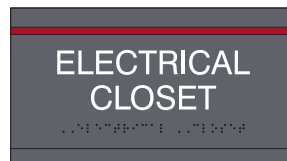
REGULATORY (J)



OFFICE/ROOM (D)



WORKSTATION (E)



UTILITY (G)

# 1200

## DESIGN SERIES

---

The People Signs 1200 Design Series is a **contemporary, arced aluminum, and modular concept**. This trending style complements environments with columns or curved architectural features. The removable lens allows for customizable and changeable paper inserts. Overall, this satin aluminum finish design series is an eye-catching and modern approach to a sign solution that is ADA compliant. These signs may be designed and hung with the arc from left to right or top to bottom.



# 1200 Design SERIES

CURVED EXTRUSION  
WITH 13/16" DEPTH

CLEAR LENS

CUSTOMIZABLE  
PAPER INSERT

TACTILE RAISED TEXT

GRADE II  
BRAILLE

(AVAILABLE IN CLEAR, WHITE,  
BLACK, AND STAINLESS STEEL)

ADA COMPLIANT  
NON-GLARE ACRYLIC

SIGN TYPE D, OFFICE/ROOM

INJECTION MOLDED  
END CAP

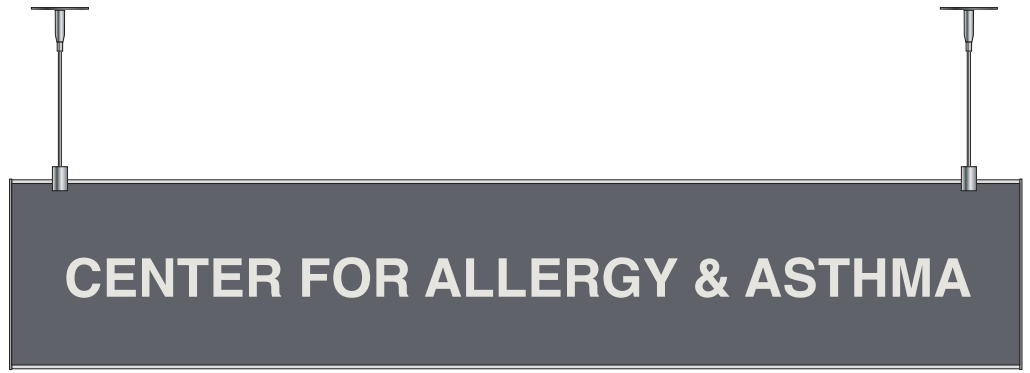
# 1200 Design Series

The 1200 Series features a satin aluminum, arced system with an ADA compatible and flexible acrylic lens that allows for easy access and removal of insert.





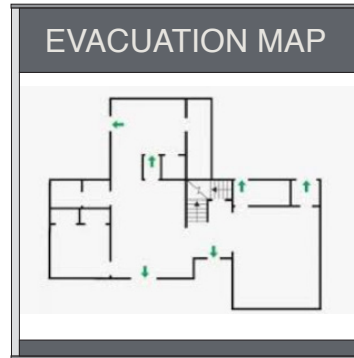
**PROJECTING (P)**



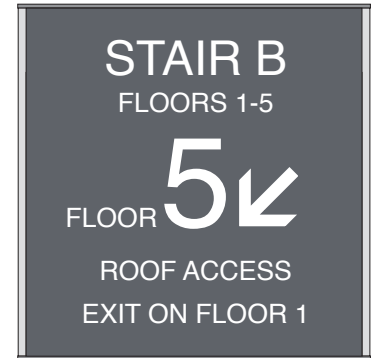
**SUSPENDED (S)**



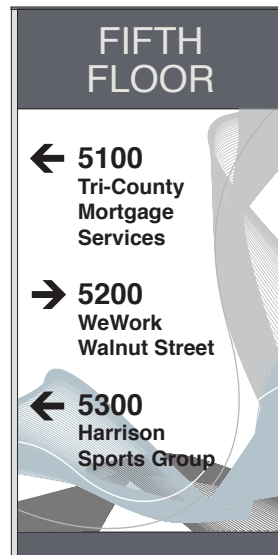
**DIRECTORY (A)**



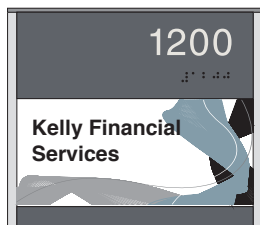
**EVACUATION (C)**



**STAIRWELL (N)**



**DIRECTIONAL (B)**



**OFFICE/ROOM (D)**



**WORKSTATION (E)**



**UTILITY (G)**



**REGULATORY (J)**



# 1300

## DESIGN SERIES

---

The People Signs 1300 Design Series is a **whimsical twist on the typical square sign series**. The curved header is available in rich wood laminates or in any ADA compliant non-glare acrylic. Another attractive feature of this sign series is the dimensional aluminum accent bar that gives the sign a modern, sophisticated edge. The full pass-through from either the right or left side allows for a customizable paper insert uniquely designed for your environment. From the side profile, this is a beautifully layered sign with varying elements.



# 1300 Design SERIES

CURVED DESIGN

TACTILE RAISED TEXT

GRADE II  
BRAILLE  
(AVAILABLE IN CLEAR, WHITE,  
BLACK, AND STAINLESS STEEL)

ALUMINUM  
ACCENT  
BAR

CLEAR LENS FOR  
PAPER INSERTS

CUSTOMIZABLE  
PAPER INSERT

FOOTER

SIGN TYPE D, OFFICE/ROOM

BACKER



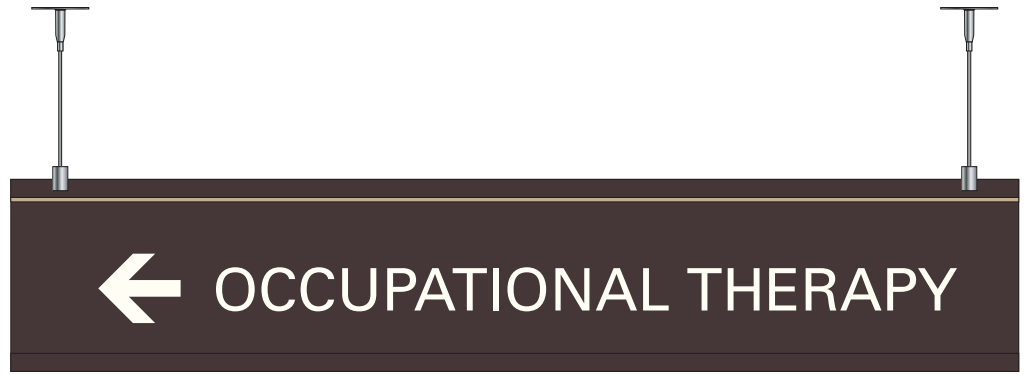
# 1300 Design Series

The 1300 Design Series is distinguished by a wave-cut header and an aluminum accent bar that creates a distinctive look for a contemporary environment.

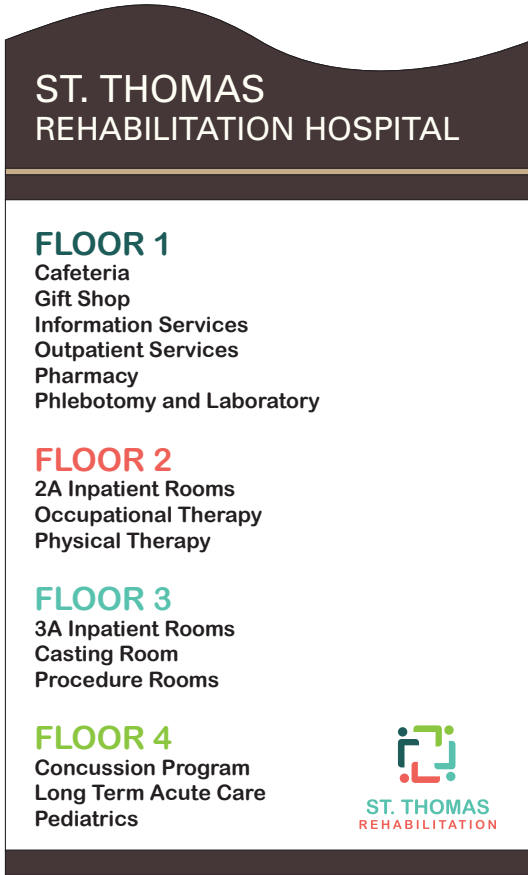




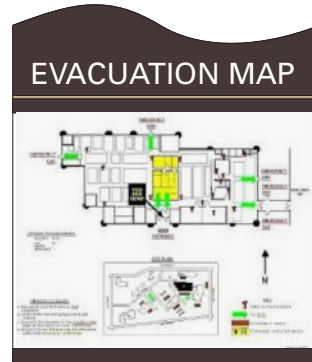
PROJECTING (P)



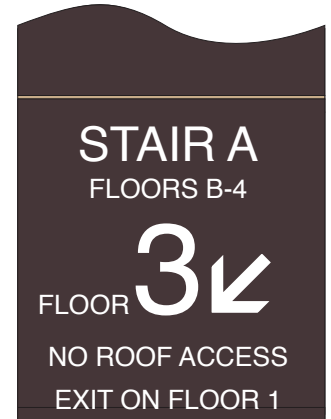
SUSPENDED (S)



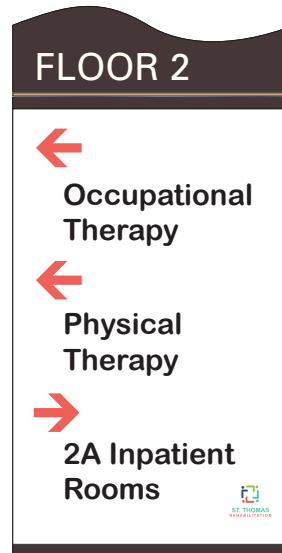
DIRECTORY (A)



EVACUATION (C)



STAIRWELL (N)



DIRECTIONAL (B)



REGULATORY (J)



OFFICE/ROOM (D)



WORKSTATION (E)



UTILITY (G)



# 1400

## DESIGN SERIES

---

The People Signs 1400 Design Series is a modular, ADA compliant concept constructed around satin aluminum extrusions. These **industrial style extrusions** snap into place allowing for the ultimate in versatility. The clear lens protects alterable paper inserts. The side profile of this sign series is slim and the layered construction is hidden behind the injection molded end caps.

# 1400 Design SERIES

TACTILE  
RAISED TEXT

GRADE II  
BRAILLE  
(AVAILABLE IN CLEAR, WHITE,  
BLACK, AND STAINLESS STEEL)

ADA COMPLIANT  
NON-GLARE  
ACRYLIC

REMOVABLE  
CLEAR LENS FOR  
PAPER INSERT

INJECTION MOLDED  
END CAP

CUSTOMIZABLE  
PAPER INSERT

SATIN  
ALUMINUM  
EXTRUSION

SIGN TYPE D, OFFICE/ROOM

# 1400 Design Series

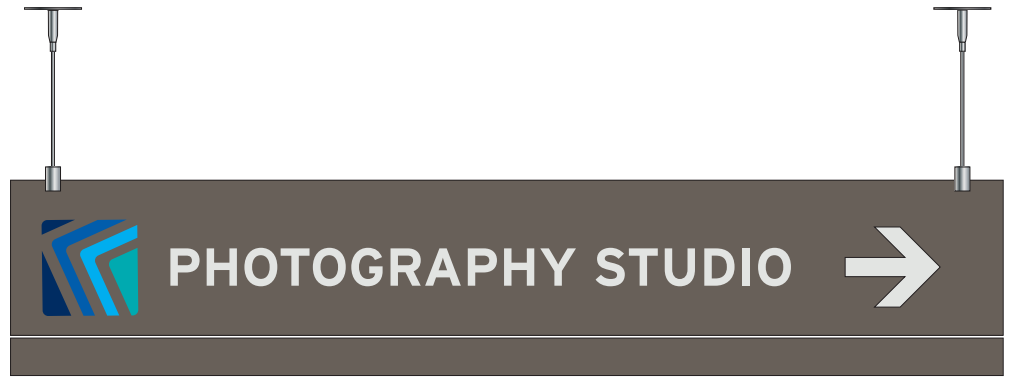
The 1400 Series is a flat profile, modular sign system using extruded aluminum and changeable inserts. End caps secure single face signs, while additional vertical channels create directories and larger sign systems.







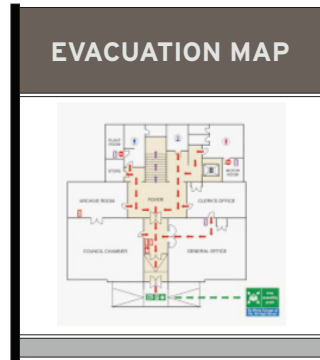
**PROJECTING (P)**



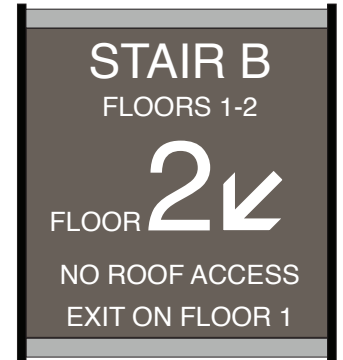
**SUSPENDED (S)**



**DIRECTORY (A)**



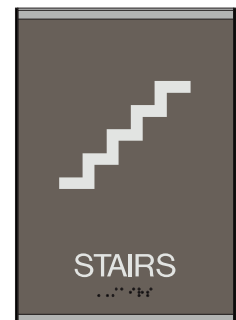
**EVACUATION (C)**



**STAIRWELL (N)**



**DIRECTIONAL (B)**



**REGULATORY (J)**



**OFFICE/ROOM (D)**



**WORKSTATION (E)**



**UTILITY (G)**

# 1500

## DESIGN SERIES

---

The People Signs 1500 Design Series features a unique combination of 3D acrylic. This ADA compliant sign series is **the ultimate display of depth and dimensionality** using layered plastic and acrylic materials. The possibilities are endless with the color combinations for this series. The top and bottom acrylic colors can be the same or different — the choice is yours! Select this series for environments that are modern and may feature glass walls or windows.

# 1500 Design SERIES

CUSTOMIZABLE  
PAPER INSERT

DIMENSIONAL  
CLEAR LENS  
ACCENTS THE  
PAPER INSERT

Anthony Morgan  
Art Director

ADA COMPLIANT  
NON-GLARE ACRYLIC

1500

BACKER

TACTILE RAISED TEXT

GRADE II BRAILLE  
(AVAILABLE IN CLEAR, WHITE,  
BLACK, AND STAINLESS STEEL)

SIGN TYPE D, OFFICE/ROOM



# 1500 Design Series

The 1500 Design Series features a raised profile water clear dimensional acrylic lens for an attractive, high quality appearance. The acrylic combined with a graphic insert drives the look of this contemporary solution.

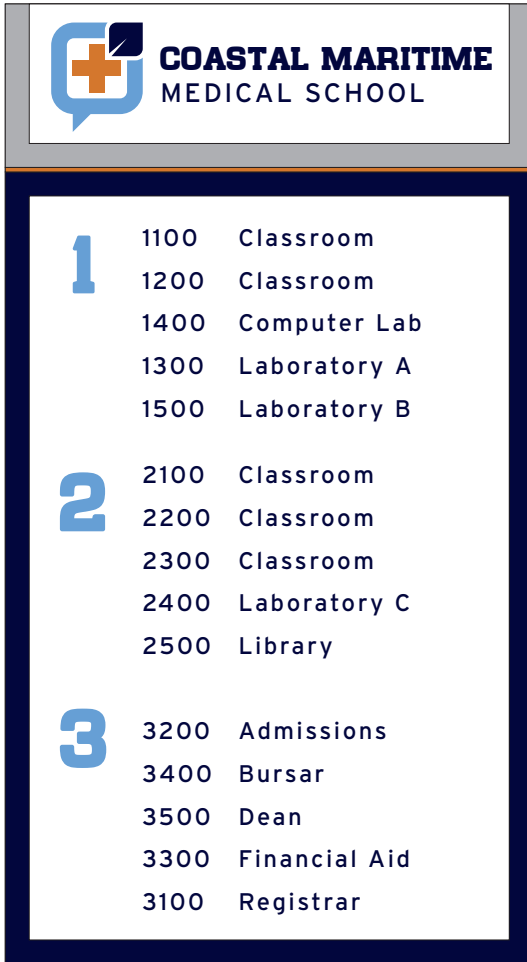




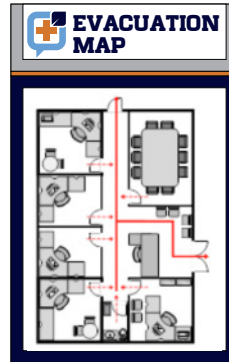
PROJECTING (P)



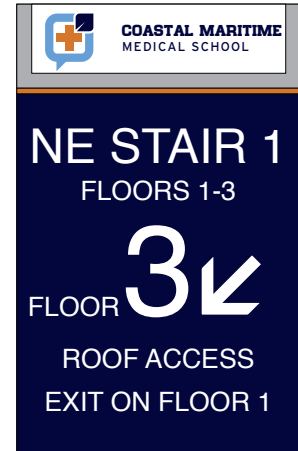
SUSPENDED (S)



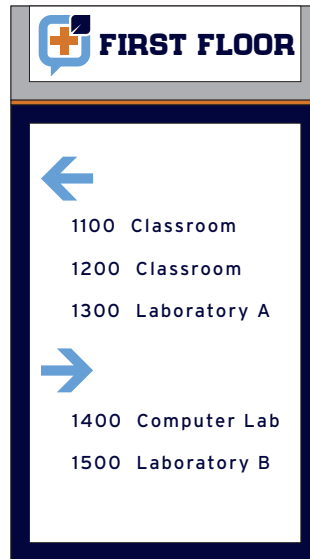
DIRECTORY (A)



EVACUATION (C)



STAIRWELL (N)



DIRECTIONAL (B)



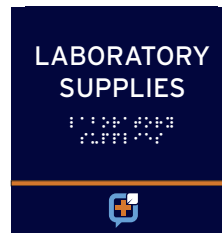
REGULATORY (J)



OFFICE/ROOM (D)



WORKSTATION (E)



UTILITY (G)

# 1600

## DESIGN SERIES

---

The People Signs 1600 Design Series is an oversized sign series with multiple layers. This is **an exquisite sign with an ultimate, high-end design**, yet still ADA compliant. The front panel has a curved header and an area for a dimensional accent stripe or aluminum accent bar. The clear lens allows for a full pass-through from either the right or left. The decorative backer adds an additional layer and depth to the sign. Choose from an array of our ADA compliant, non-glare acrylic colors or our metallic and wood laminate options. This sign series is ideal in a luxurious environment or one known for being top-of-the-line.



# 1600 Design SERIES

TACTILE RAISED TEXT

GRADE II BRAILLE  
(AVAILABLE IN CLEAR, WHITE,  
BLACK, AND STAINLESS STEEL)

ARCED BACKER

ACCENT  
STRIPE

CUSTOMIZABLE  
PAPER INSERT

CLEAR LENS FOR  
CUSTOMIZABLE  
PAPER INSERTS

ACRYLIC IN  
METALLIC FINISH

DECORATIVE  
BACKER USING  
WOOD LAMINATE

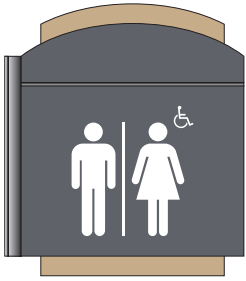
SIGN TYPE D, OFFICE/ROOM



# 1600 Design Series

People Signs 1600 Series features a curved header against a contrasting, matching-profile backer that handsomely offsets the sign face. An aluminum accent bar cuts through the upper area to create a distinctive feature.





**PROJECTING (P)**



**SUSPENDED (S)**

**1857 BUILDING**

**FIRST FLOOR**  
 Vallastro & Associates 100  
 Carey Creative 102  
 The Doucette Group 103

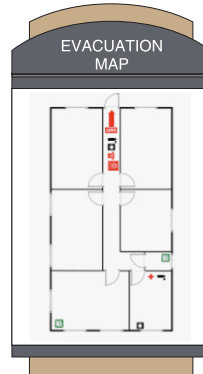
**SECOND FLOOR**  
 City View Engineering 200  
 Rodgers & Rodgers, Esquire 202

**THIRD FLOOR**  
 Coffee Shop 300  
 Cafeteria 302  
 GroupThink 304  
 City Arts Alliance 306

**FOURTH FLOOR**  
 Lehigh Lead Generation 400

**PAVILION**  
 Geis Contracting P01  
 Magnolia Marketing P02  
 Clarke & Kelly P03  
 Central CPA P04

**DIRECTORY (A)**



**EVACUATION (C)**

**NE STAIR 1**  
 FLOORS 1-P

**P** ↙

FLOOR

ROOF ACCESS  
 EXIT ON FLOOR 1

**STAIRWELL (N)**

**PAVILION**

← **SUITE P01**  
 Geis Contracting

**SUITE P03**  
 Clarke & Kelly

→ **SUITE P02**  
 Magnolia Mktg

**SUITE P04**  
 Central CPA

**DIRECTIONAL (B)**



**SUITE 100**  
 Vallastro & Associates

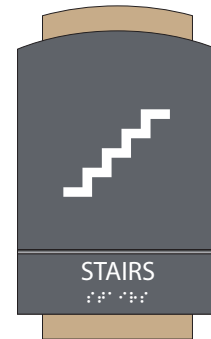
**OFFICE/ROOM (D)**

Liam Rodgers

**WORKSTATION (E)**

**JANITOR CLOSET**

**UTILITY (G)**



**REGULATORY (J)**



# 1700

## DESIGN SERIES

---

The People Signs 1700 Design Series is the **ultimate in simple sophistication** and is essentially a combination of a few design components. This ADA compliant design features a curved header and added dimensionality from the aluminum accent bar. An open pass-through lens from the right or left protects the customizable paper insert. Choose this sign series for almost any environment as the design options are infinite maximizing various laminates and acrylic colors.

# 1700 Design SERIES

TACTILE RAISED TEXT

CURVED HEADER

GRADE II BRAILLE

(AVAILABLE IN CLEAR, WHITE,  
BLACK, AND STAINLESS STEEL)

ALUMINUM  
ACCENT BAR

ADA COMPLIANT  
NON-GLARE ACRYLIC

CUSTOMIZABLE  
PAPER INSERT

CLEAR LENS FOR  
PAPER INSERTS

FOOTER

BACKER

SIGN TYPE D, OFFICE/ROOM

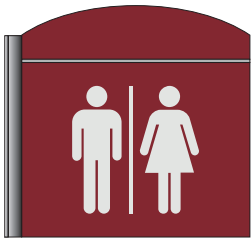


# 1700 Design Series

Features an arced header finished in acrylic or a wood-grain laminate, accented with an aluminum accent bar.








**PROJECTING (P)**



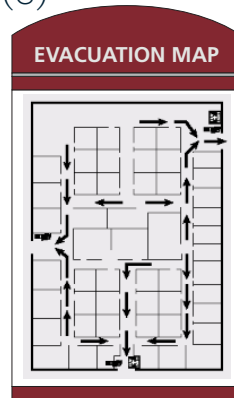
**SUSPENDED (S)**

**SPRINGHAVEN CHARTER SCHOOL** 

<b>FIRST FLOOR</b>	
Administration	100
Arts Wing	120
Auditorium	110
Auxiliary Gym	115
Cafeteria	106
Classrooms	102-130
Computer Lab	128
Eagles Spirit Store	124
<b>SECOND FLOOR</b>	
Boys Locker Room	222
Classrooms	202-250
Girls Locker Room	224
Guidance Office	200
Gymnasium	220
Library	204
Music Room	226
Nurse	208
Science Lab	210


**HOME OF THE EAGLES!**

**DIRECTORY (A)**




**EVACUATION (C)**


**NE STAIR 1**  
FLOORS 1-2


FLOOR **2** 

NO ROOF ACCESS  
EXIT ON FLOOR 1

**STAIRWELL (N)**

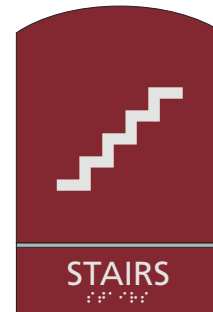
**ADMINISTRATION** 

 **MAIN OFFICE**  
Asst. Principal  
Attendance  
Curriculum Director  
Principal  
Superintendent

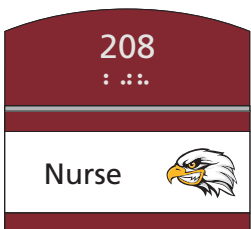
 **ATHLETIC OFFICE**  
Athletic Director  
Asst. Athletic Director  
Head Trainer

**HOME OF THE EAGLES!**

**DIRECTIONAL (B)**



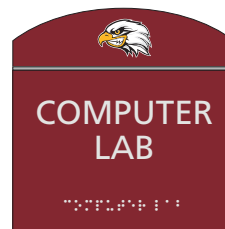
**REGULATORY (J)**



**OFFICE/ROOM (D)**



**WORKSTATION (E)**



**UTILITY (G)**

# 1800

## DESIGN SERIES

---

The People Signs 1800 Design Series is an original style in a framed design. This is **one of our most popular sign choices** because of its very versatile appearance and ADA compliance. The changeable paper insert is surrounded by a framed lens window creating a vandal resistant option. There is ample space on the sign header to add a logo or other branding element. The side profile of this design series is slim, yet layered. The selection of this sign is appropriate for any environment and coordination is just a matter of color.



# 1800 Design SERIES

TACTILE RAISED TEXT

ADA COMPLIANT NON-GLARE  
ACRYLIC HEADER

GRADE II  
BRAILLE

(AVAILABLE IN CLEAR, WHITE,  
BLACK, AND STAINLESS STEEL)

ACCENT  
STRIPE

BEVELED EDGES

CLEAR LENS  
WINDOW FOR  
PAPER INSERTS

CUSTOMIZABLE  
PAPER INSERT

SIGN TYPE D, OFFICE/ROOM

BACKER



# 1800 Design Series

The 1800 Design Series is a framed traditional sign system with a contrasting accent stripe on the face of the header.





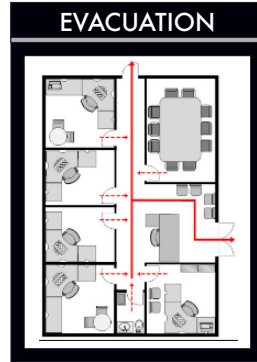
PROJECTING (P)



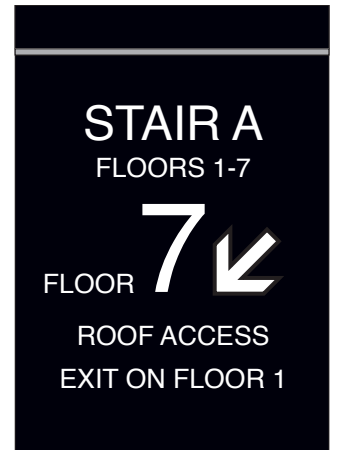
SUSPENDED (S)



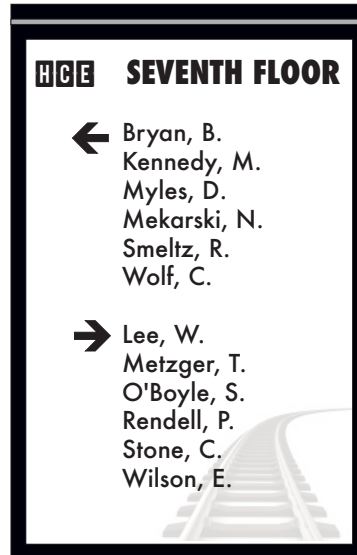
DIRECTORY (A)



EVACUATION (C)



STAIRWELL (N)



DIRECTIONAL (B)



REGULATORY (J)



OFFICE/ROOM (D)



WORKSTATION (E)



UTILITY (G)

# 1900

## DESIGN SERIES

---

The People Signs 1900 Design Series is an attention grabbing system that has a strong visual appeal — which is important when you want to incorporate signage into the interior design. The durable acrylic gives the look and feel of glass.

Unlike traditional signage, **standoff signs are designed to be mounted with specialized hardware**, consisting of a barrel, cap, and wall screw. With this hardware, signs are able to project from the wall on which they're mounted. As a result, standoff signs have an eye-catching, 3D effect. Additionally, the standoffs have a locking mechanism making it difficult for a vandal to alter or change the sign inserts.



# 1900 Design SERIES

CUSTOMIZABLE  
INSERT AVAILABLE  
WITH VARYING  
MATERIALS

TWO LAYERS OF  
P95 CLEAR ACRYLIC  
GREEN EDGE WITH  
CLEAR VELLUM PRINTED INSERT

TACTILE RAISED TEXT

BRUSHED  
ALUMINUM  
LOCKING STANDOFFS

SIGN TYPE D, OFFICE/ROOM

GRADE II BRAILLE  
(AVAILABLE IN CLEAR, WHITE,  
BLACK, AND STAINLESS STEEL)



All visitors  
Must Check In  
With Security

225



# 1900 Design Series

The 1900 Design Series is a dramatic, 3D presentation for signage using brushed aluminum standoffs that create air space between the sign and the wall.






**PROJECTING (P)**

# The Strickland Studios

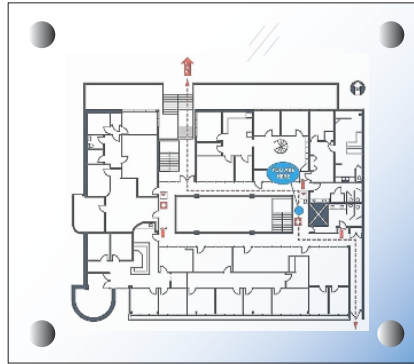
**SUSPENDED (S)**



**TEAL TOWERS TWENTY**

<b>1</b>	Allen Associates	100
	Fern Contracting	102
	Dr. S. MacKenzie, DDS	103
	O'Brien Events	101
<b>2</b>	Adobe Architects	206
	Carbon Eastman	200
	London & London	210
	McDade Marketing	202
<b>3</b>	Allentown Arts Council	304
	The Learning Lab	302
	Local Lighting LLC	306
	Merner Sports	300
<b>4</b>	Harrison Gilley	401
	Hines Publishing	403
	Interactive Inc.	400
	Paribus	402
<b>5</b>	The Allergy Group	503
	Foles Fitness	500
	Potts Interiors	501
	The Strickland Studios	502


**DIRECTORY (A)**



**EVACUATION (C)**



**STAIRWELL (N)**

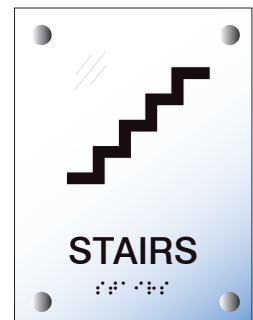


**4**

- ← 401 Harrison Gilley
- ← 403 Hines Publishing
- ← 400 Interactive Inc.
- 402 Paribus

TEAL TOWERS TWENTY

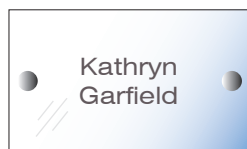
**DIRECTIONAL (B)**



**REGULATORY (J)**



**OFFICE/ROOM (D)**



**WORKSTATION (E)**



**UTILITY (G)**



# 2000 DESIGN SERIES

---

The People Signs 2000 Design Series offers an **elegant, streamlined solution** for multiple wayfinding needs. This flat, modular signage system is environmentally friendly, and comes in multiple designs, sizes, and shapes, with special profiles available for both changeable and permanent inserts of various thicknesses.

The 2000 Design Series is ideal for wall signs, table signs, suspended signs and flag signs, creating a stunning and uniform look throughout every aspect of the project. This style tells visitors from the very first moment that they are entering a place of quality.

# 2000 Design SERIES

ALUMINUM  
FINISH HEADER

CAN ACCEPT  
ADA GRADE II  
BRAILLE INSERTS

3C

CLEAR LENS  
WINDOW FOR  
PAPER INSERTS

NURSES STATION

CUSTOMIZABLE  
PAPER INSERT

SMART END CAPS  
AVAILABLE IN  
GREY OR BLACK

ALUMINUM  
FINISH FOOTER

SIGN TYPE D, OFFICE/ROOM

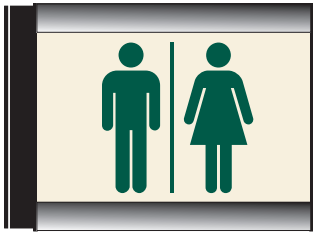


# 2000 Design Series

Featuring a flat, modular system in an aluminum finish that can accommodate inserts of varying thicknesses.







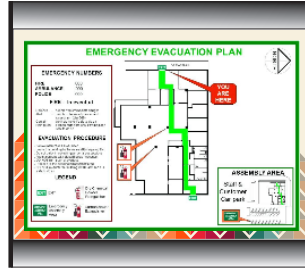
PROJECTING (P)



SUSPENDED (S)



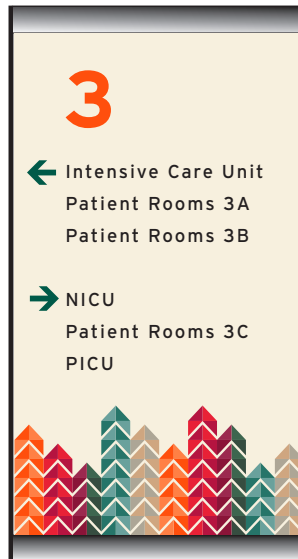
DIRECTORY (A)



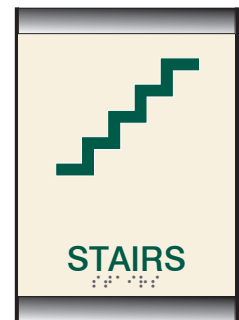
EVACUATION (C)



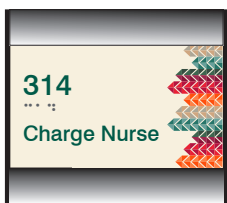
STAIRWELL (N)



DIRECTIONAL (B)



REGULATORY (J)



OFFICE/ROOM (D)



WORKSTATION (E)



UTILITY (G)

WALL GRAPHICS  
ON CORRUGATED METAL

PAINTED ACRYLIC  
SURROUND WITH  
STANDOFFS

GLASS GRAPHICS

DIMENSIONAL  
LETTERS

DIGITALLY  
PRINTED GRAPHIC  
ON ACRYLIC PANELS



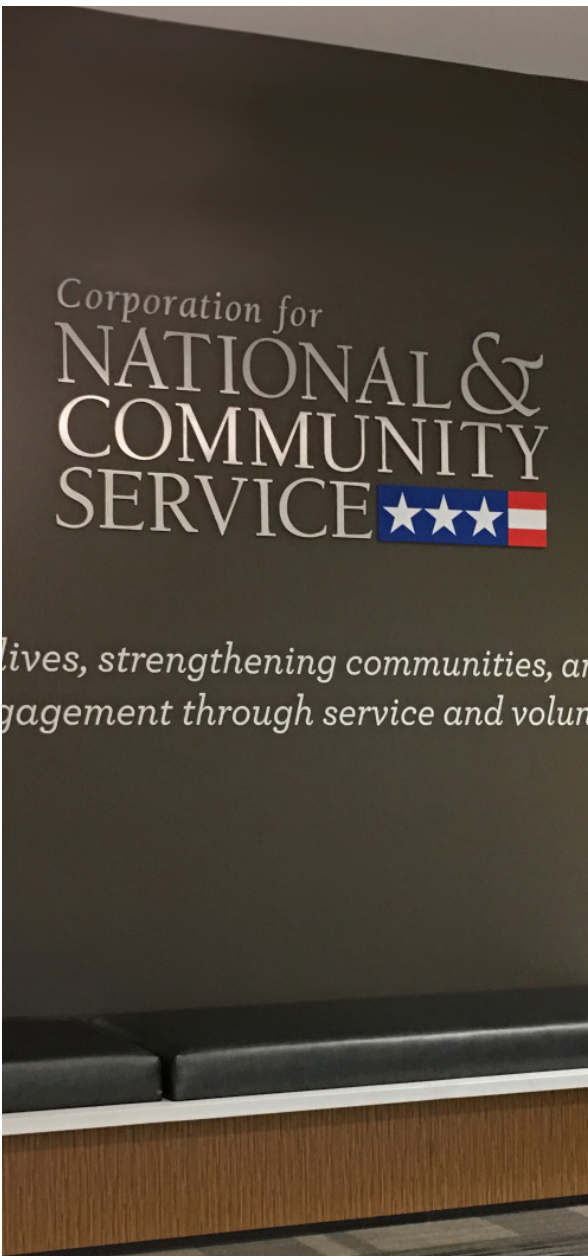


# People Signs®

## EXPERIENTIAL DESIGN

Experiential design involves the synergy and orchestration of typography, color, form, imagery, and technology while focusing on content to create environments that communicate. Generating a total experience within your space can include branding, wayfinding, recognition, and corporate communications. People Signs' talented team is ready to assist you in the development of a well-rounded experience within your facility's interior.

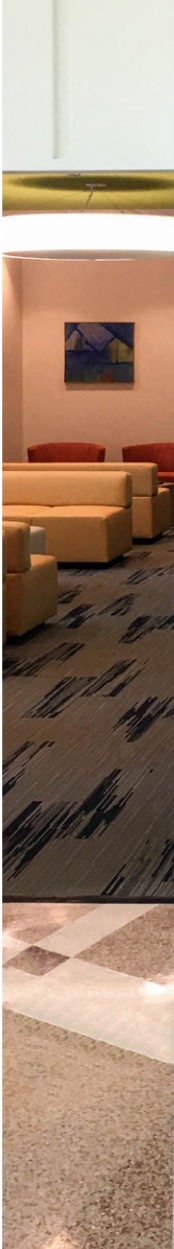




*lives, strengthening communities, and engagement through service and volun*

**BRANDING** is imperative to a company as it defines who they are, their products, their message, and their overall goal to both the general public and their employees. The intent at all times is to project a unified message and a consistent corporate identity.

**WAYFINDING** is information systems that guide people through a physical environment and enhance their understanding and experience of the space. Wayfinding is critical in creating an effortless and stress-free path for individuals in the built environment such as healthcare and educational campuses, transportation facilities, and corporations.





**CORPORATE COMMUNICATION** is a well-articulated and consistent corporate communication strategy that reinforces a positive image about a company. It also enables the company to have a distinctive identity in a crowded and intensely competitive marketplace.

# PEOPLE ARE OUR STRENGTH

Our success depends on the respect, diversity, collaboration, and commitment of our workforce.



**RECOGNITION** is the opportunity to showcase the achievements of significant individuals and their contributions. This may include donors, employees, and/or memorials. There is no better way to show your appreciation.

# DIMENSIONAL LETTERS & LOGOS

---

When clients walk into your business, first impressions count. Having a branded logo sign in your reception area creates an impression of credibility from the moment your prospective clients enter.

People Signs specializes in premium-quality office signage using only architectural-grade materials and creative designs to produce lobby signs that reflect the professional image you want to portray. Our corporate lobby signs are available in a wide variety of materials, finishes, colors, and mounting options, so you'll end up with the sign that is ideal for your space, image, decor, and budget.

No matter what type of sign or material you're looking for, People Signs can help. **Choose from corporate signs made from materials such as cut metal, cut acrylic, or etched glass. Create panel-type signs and signs with individually mounted letters.** Let us help you turn your vision into reality.





## DIMENSIONAL LETTERS & LOGOS

### SIGNS BY TYPE:

#### Dimensional Logo Signs

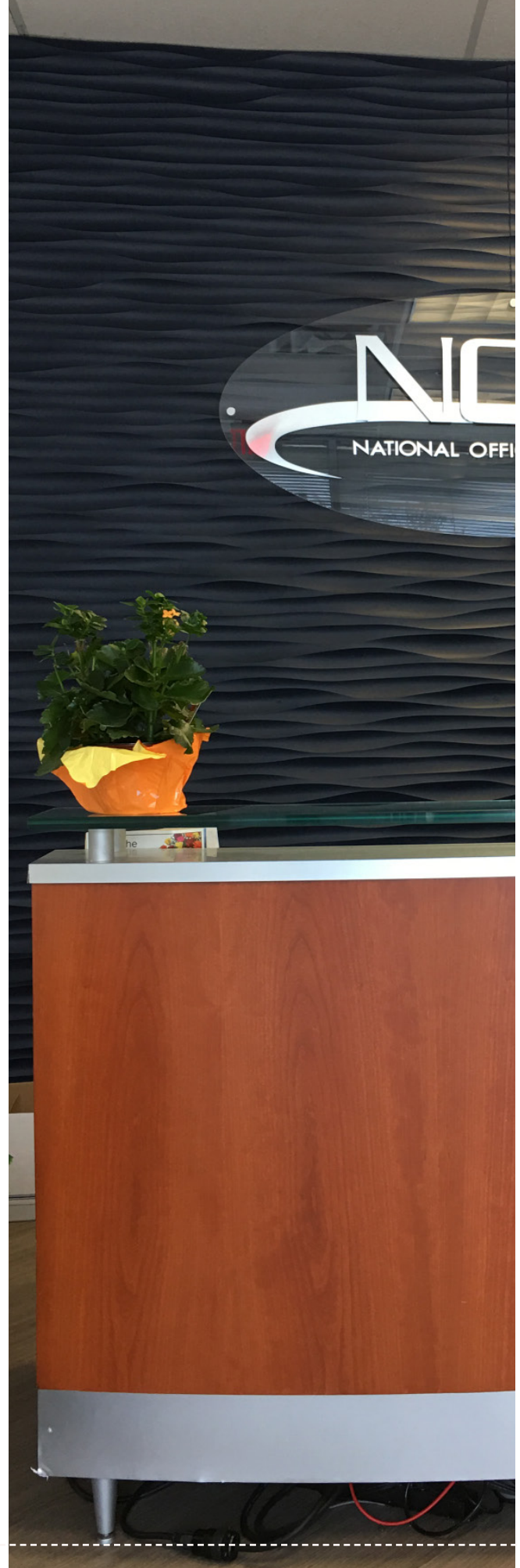
Choose from a variety of architectural grade metals, acrylic, and metal laminates. Each letter and piece of your logo is individually cut and mounted on your wall.

#### Panel Signs

Placing your sign on a panel adds an architectural element, makes it stand out, and also allows simple installation and the ease of relocating it at a later date. Choose from a variety of panels including clear or frosted acrylic, glass, brushed aluminum, and wood.

#### Backlit Signs

Ensure your sign gets noticed with back-lighting. All our backlit signs are created with energy efficient, low-voltage LED lights. Other options include individual fabricated backlit letters, reverse-cut metal panels, and edge-lit glass signs.







**Foundation**  
INSURANCE GROUP



# SEALS & PLAQUES

---

Integrity and performance are foundational characteristics of any seal or plaque, whether for government or an institutional setting. Nothing acknowledges the long-term value of service or philanthropy more than casting or etching.

With our wide variety of materials and finishes, there is sure to be a plaque for you. Choose from bronze, brass, copper, stainless steel, and aluminum. Additionally, cast plaques offer long lasting raised text, while etched plaques allow you to include a large amount of text and detail. These products are constructed to last a lifetime.

Design choices include the size, shape, font, borders, colors and finishes, along with many logo and portrait options.





## MATERIALS AND METHODS FOR SEAL & PLAQUE CREATION

### CAST

Classical in style and substantial in feel, cast plaques can be produced in a multitude of finishes while integrating a wide variety of details.

Cast plaques are the first choice for any dedication or marking that will last more than a lifetime.

### CARVED

Signs and plaques carved, routed, or sandblasted from High-Density Urethane (HDU) are ideal when your budget doesn't allow for more expensive metals.

Light weight and durable, these signs are detailed by hand for a true artisan's appearance.

### ETCHED

Seals or plaques that are chemically etched, use a process that allows for some of the most detailed artwork to be forever emblazoned into a variety of metals. Whether the design calls for recessed or raised graphics, line art or photography, etched plaques are a durable and attractive solution that stand the test of time.

### DIGITALLY PRINTED VINYL

These seals and plaques are the least expensive of our seal and plaque options. They utilize multicolor, digitally printed appliques that are bonded to various backing materials and meticulously cut to any shape.





# MacCracken | Huerta Collaboration Center





# WALL MURALS & GRAPHICS

---

Transform ordinary walls into ones that brand, inform, or enhance your decor!

Walls are meant to do so much more than simply hold up your ceiling. With the right graphics, walls that were once drab and dreary can transform a room, giving you the power to **brand, inspire, and beautify**.

Wall graphics come in many shapes and sizes – literally! And, there are a variety of types available! Cut vinyl letters allow you to mount a slogan or quote to a wall. Cut vinyl wall decals let you mount one or several graphics, such as a logo or products offered. If you'd like to cover a larger space with a custom wall mural, you have two options: vinyl wall wraps and custom wallpaper.

Vinyl wall wraps stretch from corner to corner and floor to ceiling. Custom wallpaper is similar in material to what you'd buy off the shelf; however, it is one-of-a-kind and digitally printed with your choice of photos, quotes, designs, or in a corporate color that's all your own!





VINYL WALL MURAL



# OPPORTUNITIES FOR WALL GRAPHICS

## WHAT ARE THE POSSIBLE USES FOR WALL GRAPHICS?

### Wayfinding

Point visitors in the right direction with vinyl lettering for walls directing them to “Restrooms,” “Science Classrooms,” and other destinations. These vinyl wall graphics might include arrows, pointing hands, or perhaps a vinyl graphic of a fork and knife leading them to “Dining Room.”

### Custom Vinyl Letters

Post inspirational words, mottos, sentences, or even longer text on smooth walls with our self-adhesive vinyl letters.

### Wall & Glass Decals

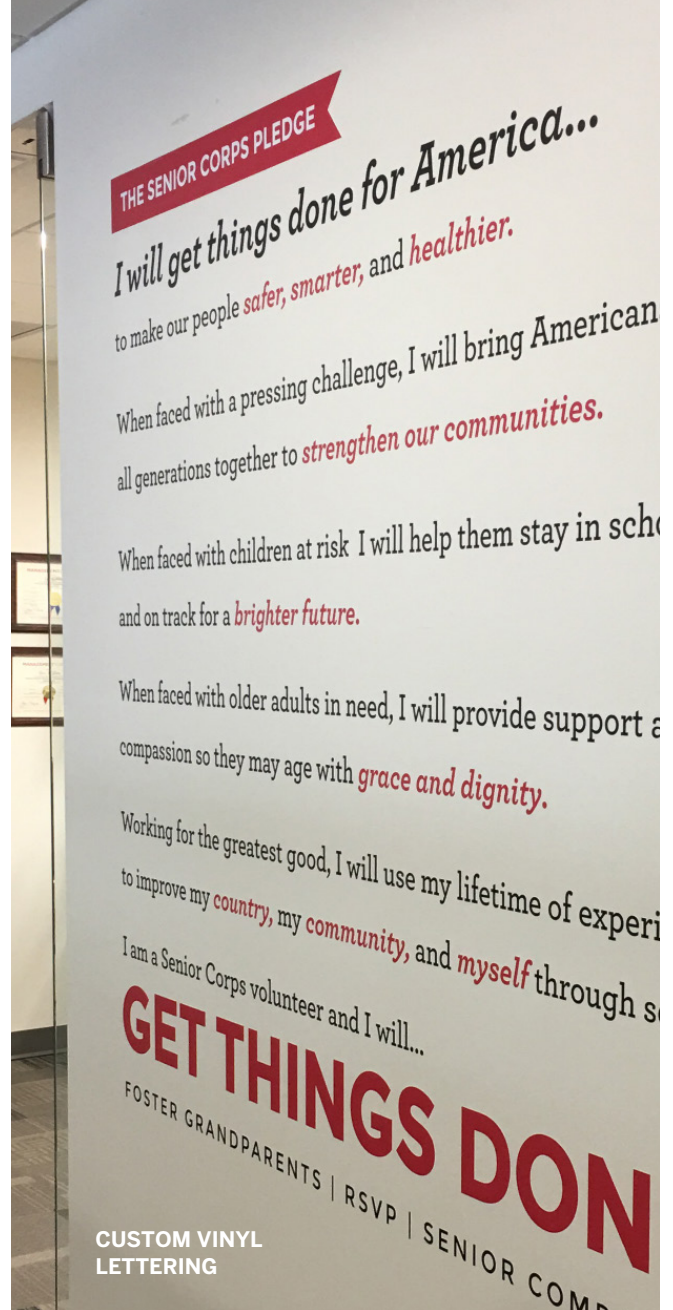
Cut to any shape, our vinyl wall and glass decals can adhere to paint, wallpaper, or glass. Use them to display a logo or a custom designed graphic.

### Full Wall Vinyl Wraps

Go floor-to-ceiling and corner-to-corner with our full wall vinyl graphics. Display larger artwork, photos, or even restaurant murals or office wall murals with this selection.

### Graphic Wallpaper

Our digitally printed wallpaper is great for enhancing your decor with graphics or photos. It's also another terrific choice for murals. Use our custom wallpaper to decorate walls in your corporate colors or designs that commercial, off-the-shelf wallpaper selections can't match.



GLASS DECAL







# RECOGNITION, AWARD, & DONOR WALLS

■-----■

A thought-out recognition display creates a sense of how important the honorees are to an organization. **Visitors will connect the significance of a wall display with the impact the individuals have made to an organization.**

A donor recognition wall displays the names of all the donors who participated in a particular campaign. The wall can take many creative forms depending on the campaign. These walls are most often installed after a large capital campaign and are usually permanent installations.

Sharing a campaign's mission and vision through branding elements on recognition or donor displays reinforces an organization's success and aligns the donors to the cause they supported.





## OPPORTUNITIES FOR RECOGNITION

### RECOGNIZE THOSE WHO FUND YOUR PROGRESS WITH DONOR PLAQUES AND DONOR RECOGNITION WALLS

Create the right interior or exterior donor plaques for your organization. Donor recognition plaques are available in a wide array of materials, including brass, bronze, stainless steel, aluminum, wood, glass, and acrylic. You'll see our plaques at universities, schools, hospitals, places of worship, and other public spaces around the country. Our expert designers will work closely with you to craft a lasting tribute. You have the option of combining the best properties of cast metal, etched, and photographic techniques to create the right look for your space and your budget.

- **Individual donor recognition plaques highlight a significant patron with a photo and message.**
- **Donor recognition walls are a series of panels that have multiple names, typically grouped in sections based on donation or sponsor levels.**

### OPPORTUNITIES

#### Wayfinding

By taking a strategic approach to donor system development, we can incorporate large, highly visible donor installations into the facility's wayfinding program, utilizing them as recognizable wayfinding landmarks. At the same time, donor recognition associated with specific facility areas can be seamlessly integrated into wayfinding and identification signage components.

#### Brand Building

By conveying information about an organization's mission and achievements, donor recognition elements can help build awareness and appreciation for the institution's brand message. This can be done in a way that highlights the role that donors play in supporting this mission.





August 14  
**1957**

President Eisenhower signed the Airways Modernization Act, which established the Airways Modernization Board. The legislation charged a three-member board with "the development and modernization of the national system of navigation and traffic control facilities to serve present and future needs of civil and military aviation."

December 20  
**1957**

The first U.S.-made turbojet airliner, the Boeing 707, first flew. Boeing's 367-80, the prototype for both the 707 and the military KC-135 Stratotanker, had first flown on Jul 15, 1954. CAA certificated the aircraft, a four-engine, long-range plane with a maximum capacity of 189 passengers on September 23, 1958. The 707 entered scheduled airline service, on October 26, 1958, with Pan American World Airways.

July 1  
**1958**

The Airways Modernization Board established the National Aviation Facilities Experimental Center (NAFEC) near Atlantic City, NJ. The fledgling Federal Aviation Agency assumed all functions of the Board, including control of NAFEC, on November 1, 1958.

August 23  
**1958**

President Eisenhower signed the Federal Aviation Act of 1958. The act assigned created two independent agencies - the Federal Aviation Agency (FAA), which was created by the act, and the Civil Aeronautics Board (CAB), which was freed of its administrative ties with the Department of Commerce.

November 1  
**1958**

President Eisenhower signed the first authorization of the Federal Aviation Agency. In 1958, the FAA received full funding and authority to begin the nation's modernization program. The nation's first air traffic control tower was dedicated in 1957. The nation's first air traffic control tower was dedicated in 1957. The nation's first air traffic control tower was dedicated in 1957. The nation's first air traffic control tower was dedicated in 1957.

December 31  
**1958**

The Federal Aviation Agency received its full year of operation responsibility. The FAA operated 121 and operated under 100 personnel and received all other funding from the FAA. The FAA operated under 100 personnel and received all other funding from the FAA. The FAA operated under 100 personnel and received all other funding from the FAA.



# RESOURCES

---

**[ADA Compliant Colors](#)**

**[ADA Compliant Fonts and Arrows](#)**

**[Common Pictograms](#)**

**[Mounting By Wall Type](#)**

**[Wayfinding By People Signs](#)**

**[Sign Series Specifications](#)**





# ADA COMPLIANT COLORS

## MATTE FINISH ACRYLIC

<b>601</b> Red	<b>602</b> Burgundy	<b>823</b> Canyon	<b>603</b> Orange	<b>701</b> Yellow	<b>901</b> Bright Green	<b>902</b> Pine Green	<b>991</b> Hunter Green
<b>903</b> Black Forest Green	<b>509</b> Bahama Blue	<b>501</b> Blue	<b>506</b> Sapphire	<b>571</b> Light Blue	<b>521</b> Coastal Blue	<b>302</b> China Blue	<b>321</b> Slate
<b>502</b> Marine Blue	<b>504</b> Air Force Blue	<b>581</b> Ultra Violet	<b>801</b> Antique Ivory	<b>808</b> Sand	<b>214</b> Ash	<b>811</b> Parchment	<b>218</b> Sandalwood
<b>201</b> White	<b>204</b> Bright White	<b>305</b> Light Grey	<b>306</b> Pearl Grey	<b>851</b> Desert Sand	<b>595</b> Driftwood	<b>331</b> Grey Flannel	<b>301</b> Grey
<b>993</b> Silver Metallic	<b>307</b> Charcoal Grey	<b>413</b> Cinder	<b>831</b> Beige	<b>805</b> Candlewick	<b>806</b> Putty	<b>802</b> Taupe	<b>803</b> Dark Brown
<b>821</b> Medium Brown	<b>401</b> Black	<b>891</b> Copper	<b>871</b> Deep Bronze	<b>771</b> Gold	<b>304</b> Silver	<b>398</b> Graphite	
<b>Photoluminescent*</b>	<b>354</b> Brushed Aluminum**	<b>313</b> Brushed Stainless**	<b>Natural Maple*</b>	<b>Select Cherry*</b>	<b>Prestige Walnut*</b>		

Colors may vary due to the printing process. 354 Brushed Aluminum has a black core. 313 Brushed Stainless has a silver core.

\* Denotes special pricing.

\*\*Denotes special pricing and due to metallic finish, not ADA compliant.

## ADA COMPLIANT FONTS AND ARROWS

Arial Regular  
ABCDEFGHIJKLMNOPQRSTUVWXYZ  
abcdefghijklmnopqrstuvwxyz  
1234567890



AvantGarde  
ABCDEFGHIJKLMNOPQRSTUVWXYZ  
abcdefghijklmnopqrstuvwxyz  
1234567890



Avenir Roman  
ABCDEFGHIJKLMNOPQRSTUVWXYZ  
abcdefghijklmnopqrstuvwxyz  
1234567890



Century Gothic Regular  
ABCDEFGHIJKLMNOPQRSTUVWXYZ  
abcdefghijklmnopqrstuvwxyz  
1234567890



Frutiger Roman  
ABCDEFGHIJKLMNOPQRSTUVWXYZ  
abcdefghijklmnopqrstuvwxyz  
1234567890



Futura Medium  
ABCDEFGHIJKLMNOPQRSTUVWXYZ  
abcdefghijklmnopqrstuvwxyz  
1234567890



Gill Sans Regular  
ABCDEFGHIJKLMNOPQRSTUVWXYZ  
abcdefghijklmnopqrstuvwxyz  
1234567890



Helvetica Regular  
ABCDEFGHIJKLMNOPQRSTUVWXYZ  
abcdefghijklmnopqrstuvwxyz  
1234567890



Interstate Regular  
ABCDEFGHIJKLMNOPQRSTUVWXYZ  
abcdefghijklmnopqrstuvwxyz  
1234567890



Myriad Roman  
ABCDEFGHIJKLMNOPQRSTUVWXYZ  
abcdefghijklmnopqrstuvwxyz  
1234567890



Swiss 721 BT Roman  
ABCDEFGHIJKLMNOPQRSTUVWXYZ  
abcdefghijklmnopqrstuvwxyz  
1234567890



Trebuchet Regular  
ABCDEFGHIJKLMNOPQRSTUVWXYZ  
abcdefghijklmnopqrstuvwxyz  
1234567890



Universe Roman 55  
ABCDEFGHIJKLMNOPQRSTUVWXYZ  
abcdefghijklmnopqrstuvwxyz  
1234567890



Verdana Regular  
ABCDEFGHIJKLMNOPQRSTUVWXYZ  
abcdefghijklmnopqrstuvwxyz  
1234567890



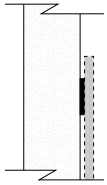


# COMMON PICTOGRAMS

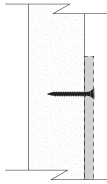
						
<b>P1</b> Telephone	<b>P2</b> Mail	<b>P3</b> Currency Exchange	<b>P4</b> Cashier	<b>P5</b> First Aid	<b>P6</b> Lost & Found	<b>P7</b> Coat Check
						
<b>P8</b> Exit	<b>P9</b> Escalator	<b>P10</b> Escalator Down	<b>P11</b> Escalator Up	<b>P12</b> Stairs	<b>P13</b> Stairs Down	<b>P14</b> Stairs Up
						
<b>P15</b> Elevator	<b>P16</b> Mens Room	<b>P17</b> Womens Room	<b>P18</b> Restroom	<b>P19</b> Gender Neutral	<b>P20</b> Water Fountain	<b>P21</b> Waiting Room
						
<b>P22</b> Information	<b>P23</b> Hotel Information	<b>P24</b> Air Transportation	<b>P25</b> Heliport	<b>P26</b> Taxi	<b>P27</b> Bus	<b>P28</b> Ground Transportation
						
<b>P29</b> Rail Transportation	<b>P30</b> Water Transportation	<b>P31</b> Car Rental	<b>P32</b> Restaurant	<b>P33</b> Coffee Shop	<b>P34</b> Bar	<b>P35</b> Shops

# MOUNTING BY WALL TYPE

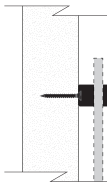
## DRYWALL SURFACE OPTIONS



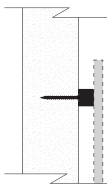
**ADHESIVE** (Double Face Tape and Silicone) For use on hard wall surfaces with a smooth finish, such as drywall. Adhesive may not be applicable for some vinyl wall coverings.



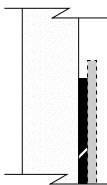
**SCREW** For use on rough surfaces such as brick and block. Also recommended on all wall-mount signs, including on drywall.



**STAND OFF** For use on smooth, hard surfaces. Not recommended for some vinyl wall coverings.

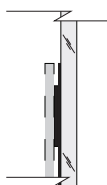


**STUD** For use on smooth, hard surfaces. Not recommended for some vinyl wall coverings.



**CLEAT** For use on smooth, hard surfaces. Not recommended for some vinyl wall coverings.

## GLASS SURFACE OPTIONS



**GLASS BACKER** For use on glass surfaces where the opposite side is visible. A vinyl piece replicates the sign shape and size and hides the double face tape adhesive from the viewer.

## FABRIC SURFACE OPTIONS



**PIN MOUNT** For use on fabric surfaces, including fabric mounted on hard material and acoustical panels.

## CUBICLE STRUCTURE OPTIONS



**HOOK** For use on cubicle and wall furniture panels. Clear material hooks over the top of the panel.



**SADDLE** For use on cubicle and wall furniture panels including clear and frosted panels. Aluminum hooks over the top of the panel and the sign is flush with the top.



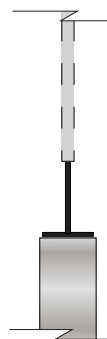
**DOUBLE SADDLE** For use on cubicle and wall furniture panels including clear and frosted panels. Aluminum hooks over the top of the panel and the signs are flush with the top.



**PANEL/TILE** For use on furniture panels and tiles. The aluminum hooks over the top of the panel or tile and is concealed by the top cap. The sign is flush with the top of the panel.



**MAGNETIC** For use on steel or magnetized surfaces.



**PANEL TOP** For use on the top surface of a cubicle or furniture panel. The bracket is extruded aluminum and is affixed to the top of the panel with pressure sensitive double faced tape.





104  
Histology  
Cytology

125  
Madeline  
Narrows

2099A  
RESTROOM

U.S. NAVAL HOSPITAL  
OKINAWA, JAPAN

DATE: October 10, 2016  
VERSION: 1  
CUSTOMER ID: 100436  
PO#: 63466  
DESIGNED BY: Roxanne Verrastro, Jolene Casey

PROJECT PROPOSAL

Wayfinding & Visual Environments

Working Date: 10/10/16  
Issue: 10/20/16  
Revision: 10/20/16  
For Review: 10/20/16  
For Review: 10/20/16  
For Review: 10/20/16

## WAYFINDING DEVELOPMENT SERVICE/PROCESS

In each project, there are unique elements to the design plan that require a custom approach. However, while each sign project has specific requirements, the typical People Signs approach to a facility-wide project includes the following:

1. Assign a project coordinator
2. Hold "Sign Task Force" meeting with all stakeholders
3. Conduct site review based on architect's/designer's/owner's plans
4. Determine or validate design solutions and sign locations
5. Capture relevant data in prepared report and sign map
6. Develop budget and timeline
7. Present samples
8. Manufacture upon receipt of approvals
9. Install signs on predetermined schedule
10. Train client's internal staff on sign management, if necessary
11. Bring project to a close with complete reporting

## DATASURE

DataSure is the People Signs management tool designed to ensure the customer is involved throughout the project and establishes absolutes of responsibilities as questions arise. The People Signs DataSure methodology is comprised of communication, document sharing, and job progression components which contribute to a project's overall success.

## PROJECT MANAGEMENT

Working with People Signs, you will have access to a full-service, knowledgeable staff capable of handling all aspects of visual communications projects. We are respected for our quality workmanship, outstanding customer service, timely fulfillment of orders/projects, and attention to detail.

Where required, all of our signs are compatible with and meet the standards of the Americans with Disabilities Act (ADA), HIPPA, NFPA, and ANSI and can be adapted to meet local government regulations. Our sign products are composed of aluminum and plastic elements which are recyclable and many offer paper insert options, making them a desirable green solution for sustainability requirements and minimal maintenance demands.

Committed to teamwork, People Signs cooperates in lockstep with all stakeholders with whom we collaborate on signage and visual communications projects. We time our work in concert with their start or completion schedules.

We are adept at handling foreign language requirements and working within government directed processes. We are available to communicate as necessitated by diverse time-zone projects. We pride ourselves on our logistic management capabilities and our prompt turnaround when asked to assist customers with a time-sensitive challenge.



# SIGN SERIES SPECIFICATIONS

Please note all dimensions listed are nominal. Refer to shop drawings for all exact dimensions.

SIGN TYPE	OVERALL DIMENSION (width x height)	DEPTH	HEADER HEIGHT	FOOTER HEIGHT	ACCENT STRIPE	INSERT SIZE	PRINTER	BRAILLE	MOUNTING HEIGHT
<b>1100 SERIES (\$)</b>									
DIRECTORY	22.00" x 40.00"	0.50"	1.50"	1.50"	0.187"	22.00" x 37.00"	Oversize	No	60.00" COS
DIRECTIONAL	18.00" x 23.00"	0.25"	1.50"	1.50"	0.187"	18.00" x 20.00"	Oversize	No	60.00" COS
OFFICE/ ROOM	5.50" x 5.00"	0.25"	2.00"	0.50"	0.187"	5.50" x 2.50"	Standard	Yes	60.00" TOS
WORK-STATION	5.50" x 3.187"	0.25"	0.50"	0.50"	0.187"	5.50" x 2.00"	Standard	No	60.00" TOS
UTILITY	7.50" x 4.187"	0.25"	0.50"	0.50"	0.187"	7.50" x 3.00"	N/A	Yes	60.00" TOS
REGULATORY	6.00" x 8.687"	0.25"	0.50"	2.00"	0.187"	6.00" x 6.00"	N/A	Yes	60.00" TOS
STAIRWELL	16.00" x 21.00"	0.25"	0.50"	2.00"	0.187"	N/A	N/A	Yes	60.00" TOS
EVAC MAP	11.00" x 9.50"	0.25"	0.50"	0.50"	0.187"	11.00" x 8.50"	Standard	No	60.00" TOS
SUSPENDED	42.00" x 8.00"	0.50"	0.50"	0.50"	N/A	42.00" x 6.50"	N/A	No	84.00" BOS
PROJECTING	8.125" x 7.687"	0.625"	0.50"	0.50"	0.187"	8.125" x 6.50"	N/A	No	84.00" BOS
<b>1200 SERIES (\$\$\$)</b>									
DIRECTORY	22.08" x 40.25"	2.50"	Variable	Variable	N/A	21.33" x 40.00"	Oversize	No	60.00" COS
DIRECTIONAL	11.156" x 22.186"	1.25"	Variable	Variable	N/A	10.625" x 22.00"	Oversize	No	60.00" COS
OFFICE/ ROOM	5.90" x 5.187"	0.625"	Variable	Variable	N/A	5.47" x 3.00"	Standard	Yes	60.00" TOS
WORK-STATION	5.90" x 2.686"	0.625"	N/A	N/A	N/A	5.47" x 2.50"	Standard	No	60.00" TOS
UTILITY	7.937" x 4.186"	0.875"	N/A	N/A	N/A	7.50" x 4.00"	N/A	Yes	60.00" TOS
REGULATORY	7.937" x 8.187"	0.875"	N/A	N/A	N/A	7.370" x 8.00"	N/A	Yes	60.00" TOS
STAIRWELL	16.85" x 20.00"	1.25"	N/A	N/A	N/A	N/A	N/A	Yes	60.00" TOS
EVAC MAP	11.156" x 11.250"	1.25"	Variable	Variable	N/A	10.625" x 11.00"	Standard	No	60.00" TOS
SUSPENDED	42.00" x 7.937"	1.875"	N/A	N/A	N/A	42.00" x 7.80"	N/A	No	84.00" BOS
PROJECTING	7.937" x 8.187"	1.75"	N/A	N/A	N/A	7.50" x 8.00"	N/A	No	84.00" BOS
<b>1300 SERIES (\$\$)</b>									
DIRECTORY	21.00" x 34.75"	0.75"	7.75"	1.00"	0.25"	21.00" x 26.00"	Oversize	No	60.00" COS
DIRECTIONAL	11.00" x 21.50"	0.50"	4.125"	1.00"	0.25"	11.00" x 17.00"	Standard	No	60.00" COS
OFFICE/ ROOM	6.00" x 5.50"	0.50"	3.125"	0.50"	0.25"	6.00" x 2.00"	Standard	Yes	60.00" TOS
WORK-STATION	6.00" x 3.00"	0.50"	N/A	N/A	0.25"	N/A	Standard	No	60.00" TOS
UTILITY	6.00" x 5.50"	0.50"	1.375"	N/A	0.25"	N/A	N/A	Yes	60.00" TOS
REGULATORY	6.00" x 9.00"	0.50"	N/A	2.00"	0.25"	N/A	N/A	Yes	60.00" TOS
STAIRWELL	16.00" x 26.125"	0.50"	4.125"	1.00"	0.25"	N/A	N/A	Yes	60.00" TOS
EVAC MAP	8.50" x 14.587"	0.50"	3.25"	0.50"	0.25"	8.50" x 10.837"	Standard	No	60.00" TOS
SUSPENDED	42.00" x 8.793"	0.50"	N/A	0.75"	N/A	N/A	N/A	No	84.00" BOS
PROJECTING	9.125" x 8.625"	0.50"	2.00"	N/A	0.25"	N/A	N/A	No	84.00" BOS

COS = Center of Sign  
TOS = Top of Sign  
BOS = Bottom of Sign

**\$ GOOD**  
**\$\$ BETTER**  
**\$\$\$ BEST**

Please note all dimensions listed are nominal. Refer to shop drawings for all exact dimensions.

## SIGN SERIES SPECIFICATIONS

SIGN TYPE	OVERALL DIMENSION (width x height)	DEPTH	HEADER HEIGHT	FOOTER HEIGHT	ACCENT STRIPE	INSERT SIZE	PRINTER	BRAILLE	MOUNTING HEIGHT
<b>1400 SERIES (\$\$)</b>									
<b>DIRECTORY</b>	24.624" x 43.50"	1.125"	6.33"	1.51"	N/A	24.00" x 35.66"	Oversize	No	60.00" COS
<b>DIRECTIONAL</b>	16.624" x 22.00"	0.875"	4.75"	0.687"	N/A	16.00" x 16.563"	Standard	No	60.00" COS
<b>OFFICE/ ROOM</b>	6.124" x 4.812"	0.875"	2.00"	N/A	N/A	6.00" x 2.375"	Standard	Yes	60.00" TOS
<b>WORK-STATION</b>	5.124" x 2.406"	0.875"	N/A	N/A	N/A	N/A	Standard	No	60.00" TOS
<b>UTILITY</b>	8.124" x 6.406"	0.875"	2.00"	N/A	N/A	8.00" x 4.00"	N/A	Yes	60.00" TOS
<b>REGULATORY</b>	6.124" x 8.812"	0.875"	N/A	N/A	N/A	N/A	N/A	Yes	60.00" TOS
<b>STAIRWELL</b>	16.624" x 22.00"	0.875"	N/A	N/A	N/A	N/A	N/A	Yes	60.00" TOS
<b>EVAC MAP</b>	11.625" x 13.00"	0.875"	3.125"	0.687"	N/A	11.00" x 8.00"	Standard	No	60.00" TOS
<b>SUSPENDED</b>	40.624" x 8.25"	0.875"	N/A	1.51"	N/A	40.00" x 6.406"	N/A	No	84.00" BOS
<b>PROJECTING</b>	8.624" x 12.125"	0.875"	0.687"	0.687"	N/A	8.00" x 2.406"	N/A	No	84.00" BOS
<b>1500 SERIES (\$\$\$)</b>									
<b>DIRECTORY</b>	22.00" x 40.00"	0.75"	7.00"	N/A	0.187"	20.00" x 31.00"	Oversize	No	60.00" COS
<b>DIRECTIONAL</b>	12.50" x 22.50"	0.50"	4.00"	N/A	0.187"	11.00" x 17.00"	Standard	No	60.00" COS
<b>OFFICE/ ROOM</b>	6.00" x 5.50"	0.50"	3.50"	2.00"	0.187"	5.00" x 3.00"	Standard	Yes	60.00" TOS
<b>WORK-STATION</b>	6.00" x 2.50"	0.50"	N/A	N/A	0.187"	N/A	Standard	No	60.00" TOS
<b>UTILITY</b>	8.00" x 8.50"	0.50"	6.50"	2.00"	0.187"	7.00" x 6.00"	N/A	Yes	60.00" TOS
<b>REGULATORY</b>	8.00" x 8.50"	0.50"	6.50"	2.00"	0.187"	7.00" x 6.00"	N/A	Yes	60.00" TOS
<b>STAIRWELL</b>	16.00" x 25.00"	0.50"	4.00"	N/A	0.187"	N/A	N/A	Yes	60.00" TOS
<b>EVAC MAP</b>	9.50" x 15.00"	0.50"	3.00"	N/A	0.187"	8.50" x 11.00"	Standard	No	60.00" TOS
<b>SUSPENDED</b>	42.00" x 8.00"	0.50"	N/A	N/A	N/A	40.50" x 6.50"	N/A	No	84.00" BOS
<b>PROJECTING</b>	8.625" x 8.50"	0.50"	6.50"	2.00"	0.187"	7.00" x 6.00"	N/A	No	84.00" BOS
<b>1600 SERIES (\$\$\$)</b>									
<b>DIRECTORY</b>	22.00" x 43.75"	0.875"	5.75"	1.00"	0.25"	22.00" x 34.00"	Oversize	No	60.00" COS
<b>DIRECTIONAL</b>	11.00" x 21.875"	0.625"	3.00"	0.50"	0.25"	11.00" x 17.00"	Standard	No	60.00" COS
<b>OFFICE/ ROOM</b>	6.00" x 7.00"	0.625"	3.125"	0.50"	0.25"	6.00" x 2.00"	Standard	Yes	60.00" TOS
<b>WORK-STATION</b>	4.75" x 3.562"	0.625"	N/A	N/A	N/A	N/A	Standard	No	60.00" TOS
<b>UTILITY</b>	8.50" x 10.375"	0.625"	3.00"	0.50"	0.25"	8.50" x 5.50"	N/A	Yes	60.00" TOS
<b>REGULATORY</b>	6.00" x 10.00"	0.625"	N/A	N/A	0.25"	N/A	N/A	Yes	60.00" TOS
<b>STAIRWELL</b>	16.00" x 24.50"	0.625"	3.00"	0.50"	0.25"	N/A	N/A	Yes	60.00" TOS
<b>EVAC MAP</b>	8.50" x 15.875"	0.625"	3.00"	0.50"	0.25"	8.50" x 11.00"	Standard	No	60.00" TOS
<b>SUSPENDED</b>	42.00" x 8.00"	0.625"	N/A	N/A	N/A	N/A	N/A	No	84.00" BOS
<b>PROJECTING</b>	9.125" x 10.375"	0.625"	N/A	N/A	0.25"	N/A	N/A	No	84.00" BOS

COS = Center of Sign  
TOS = Top of Sign  
BOS = Bottom of Sign

**\$ GOOD**  
**\$\$ BETTER**  
**\$\$\$ BEST**



# SIGN SERIES SPECIFICATIONS

Please note all dimensions listed are nominal. Refer to shop drawings for all exact dimensions.

SIGN TYPE	OVERALL DIMENSION (width x height)	DEPTH	HEADER HEIGHT	FOOTER HEIGHT	ACCENT STRIPE	INSERT SIZE	PRINTER	BRAILLE	MOUNTING HEIGHT
<b>1700 SERIES (\$\$)</b>									
DIRECTORY	21.00" x 34.605"	0.875"	7.75"	1.00"	0.25"	21.00" x 26.00"	Oversize	No	60.00" COS
DIRECTIONAL	11.00" x 21.37"	0.625"	4.00"	0.50"	0.25"	11.00" x 17.00"	Standard	No	60.00" COS
OFFICE/ ROOM	6.00" x 5.50"	0.625"	3.125"	0.50"	0.25"	6.00" x 2.00"	Standard	Yes	60.00" TOS
WORK-STATION	6.00" x 3.00"	0.625"	N/A	N/A	0.25"	N/A	Standard	No	60.00" TOS
UTILITY	8.50" x 8.875"	0.625"	2.25"	N/A	0.25"	N/A	N/A	Yes	60.00" TOS
REGULATORY	6.00" x 9.00"	0.625"	N/A	2.00"	0.25"	N/A	N/A	Yes	60.00" TOS
STAIRWELL	16.00" x 25.50"	0.625"	4.00"	0.50"	0.25"	N/A	N/A	Yes	60.00" TOS
EVAC MAP	8.50" x 14.75"	0.625"	3.25"	0.50"	0.25"	8.50" x 11.00"	Standard	No	60.00" TOS
SUSPENDED	42.00" x 8.00"	0.625"	N/A	0.75"	N/A	N/A	N/A	No	84.00" BOS
PROJECTING	9.125" x 8.625"	0.625"	2.00"	N/A	0.25"	N/A	N/A	No	84.00" BOS
<b>1800 SERIES (\$)</b>									
DIRECTORY	22.00" x 40.00"	0.5625"	6.75"	N/A	0.187"	20.50" x 31.50"	Oversize	No	60.00" COS
DIRECTIONAL	12.00" x 18.687"	0.3125"	0.50"	N/A	0.187"	11.00" x 17.00"	Standard	No	60.00" COS
OFFICE/ ROOM	5.50" x 5.00"	0.3125"	1.812"	N/A	0.187"	4.50" x 2.00"	Standard	Yes	60.00" TOS
WORK-STATION	5.50" x 2.687"	0.3125"	0.50"	N/A	0.187"	N/A	Standard	No	60.00" TOS
UTILITY	7.50" x 4.687"	0.3125"	0.50"	N/A	0.187"	N/A	N/A	Yes	60.00" TOS
REGULATORY	6.00" x 8.187"	0.3125"	N/A	2.00"	0.187"	N/A	N/A	Yes	60.00" TOS
STAIRWELL	16.00" x 22.313"	0.3125"	1.313"	N/A	0.187"	N/A	N/A	Yes	60.00" TOS
EVAC MAP	9.50" x 12.313"	0.3125"	1.313"	N/A	0.187"	8.50" x 11.00"	Standard	No	60.00" TOS
SUSPENDED	42.00" x 8.00"	0.3125"	0.75"	0.75"	0.187"	N/A	N/A	No	84.00" BOS
PROJECTING	8.125" x 7.50"	0.3125"	0.50"	N/A	0.187"	N/A	N/A	No	84.00" BOS
<b>1900 SERIES (\$\$\$)</b>									
DIRECTORY	22.00" x 40.00"	*	N/A	N/A	N/A	22.00" x 40.00"	Oversize	No	60.00" COS
DIRECTIONAL	18.00" x 23.00"	*	N/A	N/A	N/A	18.00" x 23.00"	Standard	No	60.00" COS
OFFICE/ ROOM	5.50" x 5.00"	*	N/A	N/A	N/A	5.50" x 5.00"	Standard	Yes	60.00" TOS
WORK-STATION	5.50" x 3.187"	*	N/A	N/A	N/A	5.50" x 3.187"	Standard	No	60.00" TOS
UTILITY	7.50" x 4.187"	*	N/A	N/A	N/A	7.50" x 4.187"	N/A	Yes	60.00" TOS
REGULATORY	6.00" x 8.687"	*	N/A	N/A	N/A	6.00" x 8.687"	N/A	Yes	60.00" TOS
STAIRWELL	16.00" x 21.00"	*	N/A	N/A	N/A	16.00" x 21.00"	N/A	Yes	60.00" TOS
EVAC MAP	11.00" x 9.50"	*	N/A	N/A	N/A	11.00" x 9.50"	Standard	No	60.00" TOS
SUSPENDED	42.00" x 8.00"	*	N/A	N/A	N/A	42.00" x 8.00"	N/A	No	84.00" BOS
PROJECTING	8.125" x 7.687"	*	N/A	N/A	N/A	8.125" x 7.687"	N/A	No	84.00" BOS

\* Dependent on the depth of the standoff chosen.

**\$ GOOD  
 \$\$ BETTER  
 \$\$\$ BEST**

COS = Center of Sign  
 TOS = Top of Sign  
 BOS = Bottom of Sign

Please note all dimensions listed are nominal. Refer to shop drawings for all exact dimensions.

## SIGN SERIES SPECIFICATIONS

SIGN TYPE	OVERALL DIMENSION (width x height)	DEPTH	HEADER HEIGHT	FOOTER HEIGHT	ACCENT STRIPE	INSERT SIZE	PRINTER	BRAILLE	MOUNTING HEIGHT
<b>2000 SERIES (\$\$)</b>									
<b>DIRECTORY</b>	20.00" x 41.36"	0.75"	1.00"	1.00"	N/A	20.00" x 39.37"	Oversize*	No	60.00" COS
<b>DIRECTIONAL</b>	11.00" x 20.94"	0.50"	1.00"	1.00"	N/A	11.00" x 18.96"	Oversize*	No	60.00" COS
<b>OFFICE/ ROOM</b>	6.00" x 6.30"	0.50"	1.00"	1.00"	N/A	6.00" x 4.30"	Standard*	Yes	60.00" TOS
<b>WORK- STATION</b>	6.00" x 4.73"	0.50"	1.00"	1.00"	N/A	6.00" x 2.79"	Standard*	No	60.00" TOS
<b>UTILITY</b>	10.00" x 6.30"	0.50"	1.00"	1.00"	N/A	10.00" x 4.30"	N/A	Yes	60.00" TOS
<b>REGULATORY</b>	8.50" x 12.34"	0.50"	1.00"	1.00"	N/A	8.50" x 10.35"	N/A	Yes	60.00" TOS
<b>STAIRWELL</b>	16.00" x 23.40"	0.50"	1.00"	1.00"	N/A	16.00" x 22.00"	N/A	Yes	60.00" TOS
<b>EVAC MAP</b>	11.00" x 9.82"	0.50"	1.00"	1.00"	N/A	11.00" x 7.87"	Standard*	No	60.00" TOS
<b>SUSPENDED</b>	38.00" x 7.49"	0.50"	1.00"	1.00"	N/A	38.00" x 5.55"	N/A	No	84.00" BOS
<b>PROJECTING</b>	9.63" x 8.00"	0.50"	1.00"	1.00"	N/A	7.64" x 8.00"	N/A	No	84.00" BOS

\* Dependent on the insert material chosen.

COS = Center of Sign  
TOS = Top of Sign  
BOS = Bottom of Sign

**\$ GOOD**  
**\$\$ BETTER**  
**\$\$\$ BEST**









ken | Huerta  
ation Center



December 31  
**1958**





**PEOPLE SIGNS**

1857 Walnut Street  
Allentown, PA 18104  
610-434-3613

**WWW.PEOPLESIGNS.COM**

**Business Size:** Small

**DUNS:** 045281529

**Fed ID:** 04-3748473

**Cage Code:** OGZM3

**NAICS:** 339950

**GSA Schedule:** 47QSMA21D08QP



Disclaimer: People Signs reserves the right to make changes to any of the products, sizes, colors, or materials featured in this brochure without prior notification.



